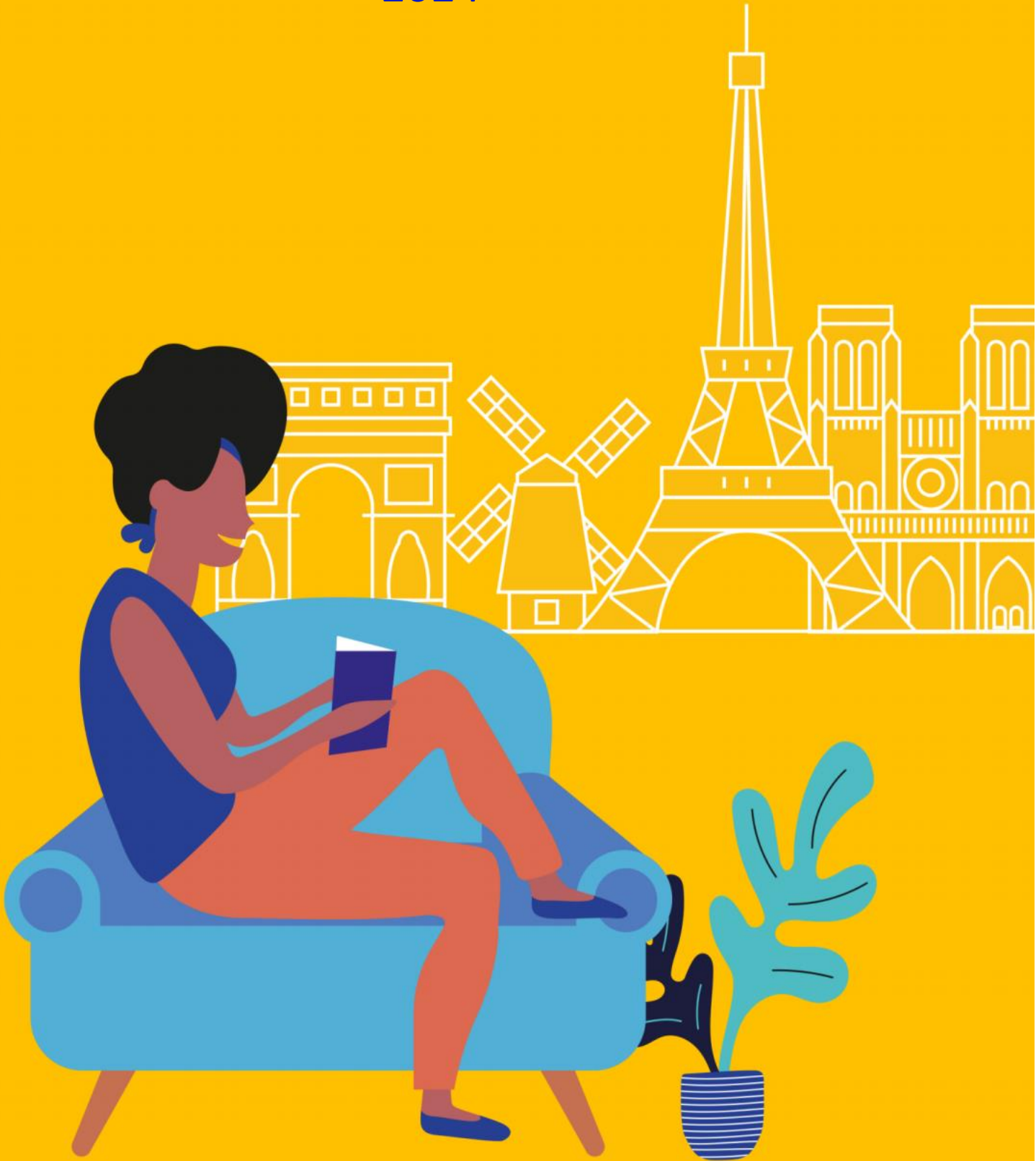


Accommodation Paris, France

2024



Accommodation in Paris

Accommodation placement fee: €105

Homestay

Our homestays are carefully selected and offer students the opportunity to learn more about the French culture in a comfortable setting while studying French in Paris.

- **Welcoming and friendly atmosphere**
- **Carefully selected by our highly respected partner agency that operates at the same standards as LSI**
- **Choice of single rooms (or twin rooms if two students book for the same time period) with B&B or HB**
- **All bed linen and towels provided**
- **Most host families will wash the student's laundry once a week for no additional cost or will suggest nearby laundry facilities**
- **Good and reliable transport links**
- **Internet access**
- **Arrival available only on Sundays and departures also on Sundays before 12 pm**



Executive Homestay Option

Executive Homestays are often of a higher standard than other home stay accommodation. They are evaluated in terms of décor and some have a private shower (en-suite or sole use) and/or extra facilities such as a television in the bedroom.

Homestay Prices

| Homestay Weekly Rates (per person per week) | Price | Extra Night Rates (per person per night) | Price |
|---|-------|--|-------|
| Single room, B&B | €270 | Single room, B&B** | €40 |
| Single room, Semi HB | €340 | Single room, Semi HB** | €50 |
| Single room, HB | €370 | Single room, HB** | €55 |
| Twin room*, B&B | €240 | Twin room*, B&B | €35 |
| Twin room*, Semi HB | €300 | Twin room*, Semi HB | €45 |
| Twin room*, HB | €330 | Twin room*, HB | €50 |
| Executive room Supplement | €55 | | |

Important: Special Diet supplement is not applicable. Students with special diets are advised to book the breakfast only option.

Key

B&B = Bed and Breakfast (Breakfast only)

Semi HB = Semi Half Board (No evening meal on Fridays or Saturdays)

HB = Half Board (Breakfast and Dinner)

*For students booking together with the same arrival and departure dates.

** No extra night during high season (July- August).

Note: HB is compulsory for any students under the age of 18 years old.

Residences

These options are more suitable for an independent student who is looking for a clean and basic accommodation at an affordable price. All students must be 18 or older, unless otherwise noted.

APPART'CITY GRANDE BIBLIOTHEQUE **** (70 Avenue de France 75013 Paris)

Location: 13th district of Paris. 15 minutes by metro to LSI Paris.

Rooms: Studios

Private Bathroom: Yes, en-suite

Meals: Self-catering; Breakfast available for an additional price

Facilities: Free Wi-Fi, refrigerator, TV, microwave, restaurant, laundry facilities

Prices (per person per night):

Studio 4-14 days: Contact LSI Paris; Studio 15-27 days: Contact LSI Paris

Studio 28+ days: Contact LSI Paris

Please note that prices may vary depending on season. Please check first for availability with LSI Paris.

Availability: Year-round

Other: Cleaning service available, reception open 24 hours

Cancellation policy: Stay for 5 to 27 nights: no charge up to 7 days before arrival. After that 25% of the total amount of the stay will be charged.

Stay for 28 nights and more: no charge up to 15 days before arrival.



APPART'CITY LA VILLETTE ** (157 Avenue Jean Jaurès 75019 Paris)

Location: 19th district of Paris. 25 minutes by metro to LSI Paris.

Rooms: Studios

Private Bathroom: Yes, en-suite

Meals: Self-catering; Breakfast available for an additional price

Facilities: Free Wi-Fi, refrigerator, TV, microwave, restaurant, laundry facilities

Prices (per person per night):

Studio 4-14 days: Contact LSI Paris; Studio 15-27 days: Contact LSI Paris;

Studio 28+ days: Contact LSI Paris

Please note that prices may vary depending on season. Please check first for availability with LSI Paris.

Availability: Year-round

Other: Cleaning service available, reception open 24 hours

Cancellation policy: Stay for 5 to 27 nights: no charge up to 7 days before arrival. After that 25% of the total amount of the stay will be charged.

Stay for 28 nights and more: no charge up to 15 days before arrival.



Residences

These options are more suitable for an independent student who is looking for a clean and basic accommodation at an affordable price. All students must be 18 or older, unless otherwise noted.

SEJOURS & AFFAIRES PARIS DAVOUT (129 Boulevard Davout 75020 Paris)

Location: 20th district of Paris. 20 minutes by metro to LSI Paris.

Rooms: Studios

Private Bathroom: Yes, en-suite

Meals: Self-catering; Breakfast available for an additional price

Facilities: Free Wi-Fi, refrigerator, TV, microwave, restaurant, laundry facilities, gym

Prices (per person per night):

3-6 days: Contact LSI Paris; 7-27 days: Contact LSI Paris; 28+ days: Contact LSI Paris

Please note that prices may vary depending on season. Please check first for availability with LSI Paris.

Availability: Year-round

Other: Cleaning service available, reception open 24 hours

Cancellation policy: Stay for 5 to 27 nights: no charge up to 7 days before arrival. After that 25% of the total amount of the stay will be charged.

Stay for 28 nights and more: no charge up to 15 days before arrival.



SEJOURS & AFFAIRES MONTREUIL – SAINT MANDE (72, rue Claude Erignac 93100 Montreuil)

Location: Montreuil. 20 minutes by metro to LSI Paris.

Rooms: Studios

Private Bathroom: Yes, en-suite

Meals: Self-catering; Breakfast available for an additional price

Facilities: Free Wi-Fi, refrigerator, TV, microwave, restaurant, laundry facilities,

Prices (per person per night):

3-6 days: Contact LSI Paris; 7-27 days: Contact LSI Paris; 28+ days: Contact LSI Paris

Please note that prices may vary depending on season. Please check first for availability with LSI Paris.

Availability: Year-round

Other: Cleaning service available, reception open 24 hours

Cancellation policy: Stay for 5 to 27 nights: no charge up to 7 days before arrival. After that 25% of the total amount of the stay will be charged.

Stay for 28 nights and more: no charge up to 15 days before arrival.



Residences

These options are more suitable for an independent student who is looking for a clean and basic accommodation at an affordable price. All students must be 18 or older, unless otherwise noted.

Generator Paris Hostel (9-11, place du Colonel Fabien 75010 Paris)

*** ONLY AVAILABLE FOR SHORT STAYS (1 to 4 weeks maximum) ***

Location: 10th district of Paris. 15 minutes by metro to LSI Paris.

Length: The stay must not exceed 30 nights

Rooms: Single, twin and quadruple room and dormitories

Private Bathroom: No, shared bathroom in dormitory except in single and twin rooms

Meals: Self-catering; Breakfast upon request available

Facilities: Free Wi-Fi, café, bar, event space, chill-out areas, roof terrace, travel shop, laundry facilities

Prices (per person per night): Contact LSI Paris;

Please note that prices may vary depending on season. Please check first for availability with LSI Paris.

Availability: Year-round.

Other: Reception open 24 hours

Cancellation Policy: Stay for 5 to 27 nights: no charge up to 7 days before arrival. After that 25% of the total amount of the stay will be charged.

Stay for 28 nights and more: no charge up to 15 days before arrival.

