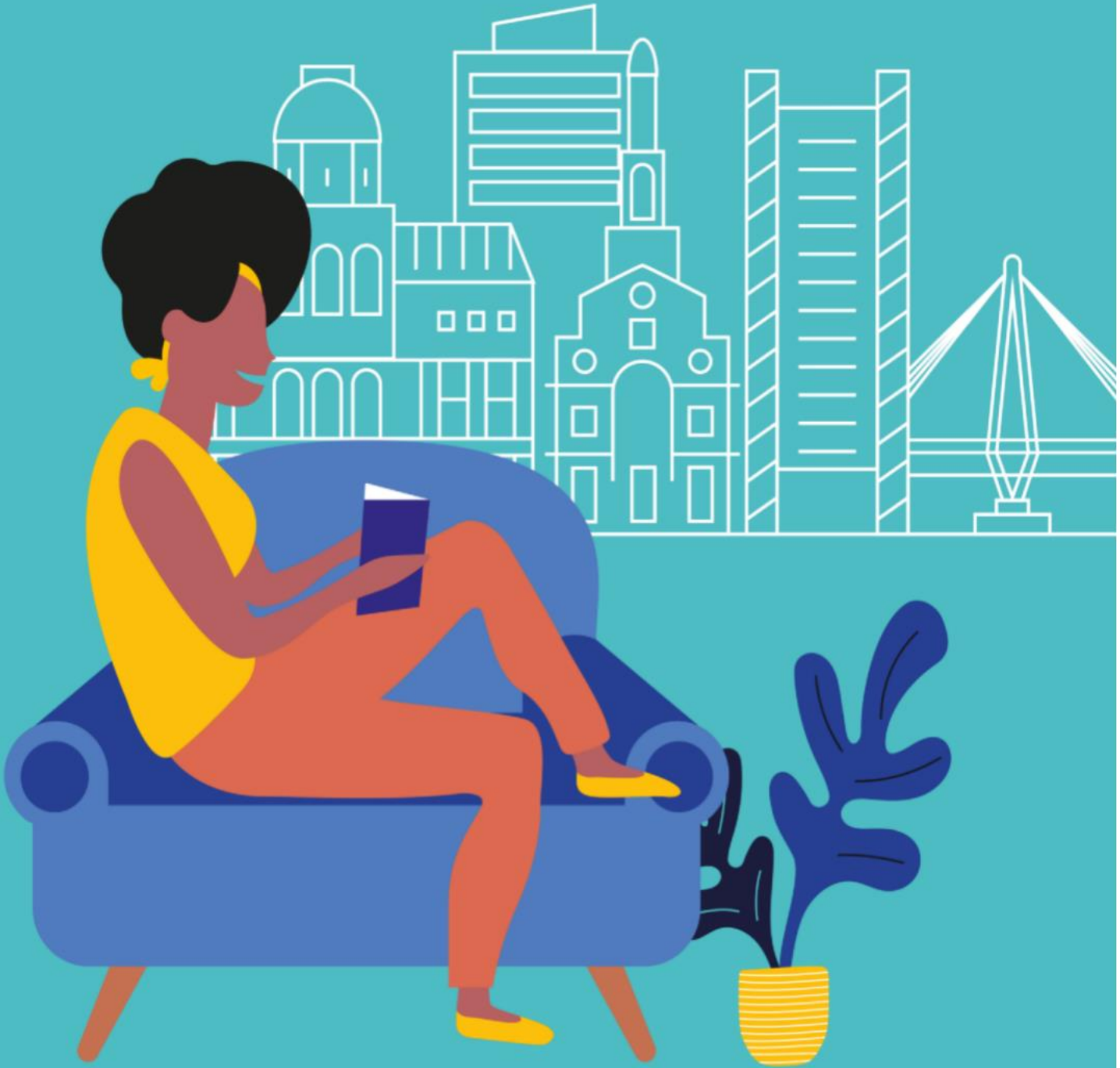


# Accommodation Boston, USA

2024



# Accommodation in Boston

**Accommodation placement fee: US\$150**

## Homestay

Our homestays are carefully selected and offer students the opportunity to learn more about the American culture and New England life in a comfortable setting.

- **Welcoming and friendly atmosphere**
- **Carefully selected by our Accommodation Coordinators and visited on a regular basis**
- **Choice of single rooms with bed and breakfast or half-board**
- **All bed linen and towels provided**
- **Laundry facilities available in the home or at local laundromats (Prices vary, but one load, wash and dry, is about US\$5-6.)**
- **Good and reliable public transportation**
- **Commutes average time from 45 minutes to 65 minutes**
- **Age Minimum: 16**



## Executive Homestay Option

Executive Homestays offer a private bathroom (en-suite or sole use). Limited availability; please contact if interested.

## Homestay Prices

### Homestay Weekly Rates (per person per week)

Single room, B&B	US\$285
Single room, Half Board	US\$365
Twin room*, B&B	US\$255
Twin room*, Half Board	US\$315

### Supplemental Rates (per person per week)

Summer Supplement (June 16 – August 25)	US\$40	Executive Supplement	US\$90
Special Diets B&B / HB	US\$25/50	Christmas Supplement	US\$60

### Extra Night Rates (per person per night)\*\*

Single room, B&B	US\$75	Twin room*, B&B	US\$65
Single room, Half Board	US\$90	Twin room*, Half Board	US\$80
~ no extra nights during the summertime			

## Key

B&B = Bed and Breakfast (Breakfast only)

HB = Half Board (Breakfast and Dinner)

\* For students booking together with the same arrival and departure dates.

\*\* Subject to availability. Please check with the school before booking flight tickets.

For more information please contact: LSI Boston E: [bos@lsi.edu](mailto:bos@lsi.edu) T: +1 617 542 3600

## Residences

### International Guest House - American Dormitory

**Location:** In the heart of the Back Bay area of Boston. 25 minute walk to LSI Boston.

**Minimum age:** 16

**Rooms:** Single and shared rooms

**Private Bathroom:** No, shared with up to 3 people in the apartment except in single rooms

**Meals:** Breakfast and dinner in price included

**Facilities:** Free Wi-Fi, community kitchen, TV lounge, fridge, telephone, laundry facilities



**Prices (per person per week)**

**Single room:** US\$1125;

**Shared room:** US\$570

A US\$200 refundable room & key deposit is collected by the residence upon arrival, payable in cash only. Late fees for late night check-ins and late departures may apply.

**Availability:** Year-round; fills up in summer. Early request recommended. Extra night options available on request. 4 weeks minimum stay.

**Other:** Weekly cleaning service available. Linens and towels provided.

**Cancellation policy:** Free cancellations for individual reservations 7 nights prior to arrival. For cancellation less than 7 days prior arrival 1 week of accommodation is charged. No refund once reservation starts.

## ESL Townhouse

**Location:** Fenway area of Boston. 30 minutes by train to LSI Boston and to popular city sights.

**Minimum age:** 18

**Rooms:** Single or Twins  
Shared Bathrooms

**Meals:** Self-catering

**Facilities:** Community kitchen, TV, telephone, free Wi-Fi, laundry facilities

*16 weeks minimum staying*

**Prices (per week, per student)**

Single room, shared bathroom: Contact LSI Boston

Twin room, shared bathroom: Contact LSI Boston



A US\$200 non-refundable move-in fee is invoiced by LSI, and a US\$250 refundable security deposit is collected by the residence upon arrival, payable in cash only. Move-in Fee included to the price.

**Availability:** Year-round; fills up in summer. Early request recommended. Saturday to Saturday only; no extra nights. *16 weeks minimum staying*

**Other:** Cleaning service every 2 weeks and prior to new arrivals. Linens and towels provided. Electricity charged separately.

**Cancellation policy:** For cancellation notice 30 days before arrival 1 week of accommodation is charged. For cancellation notice 15 days or less before arrival 2 weeks of accommodation are charged. Move in fee of US\$200 charged for all cancellations.



**Late night arrival fee:** Fee of US\$50 for transportation scheduled to arrive in Boston between 9:30pm and 11pm. Fee of US\$100 for transportation scheduled to arrive in Boston after 11pm.

**Please note: LSI reserves the right to replace residence options with similar alternatives subject to availability. Please check with the school at the time of booking. For more information please contact: LSI Boston E: [bos@lsi.edu](mailto:bos@lsi.edu)**