

English Language Training in California

Programs and Courses for Adults | San Diego

Since 1972



ABOUT CISL

Our Mission	3
-------------	---

COURSES

General English Courses

Standard English Program	4
Intensive English Program	4
Private Lessons	4

Afternoon Elective Courses

Conversational English	5
Business English	5
English for Academic Purposes (EAP)	5

Exam Preparation Courses

Cambridge English Courses	6
TOEFL Preparation Course	7
IELTS Preparation Course	7

Academic Preparation

Academic Year Program	8
CISL Pathway Program	9

Career English Program

10

Premier English

11

CISL Online Private Lessons

12

LOCATION & SERVICES

San Diego	13
Activities	14
Accommodations	15
Additional Services	16



CISL is fully accredited by the Commission for English Language Accreditation (CEA), which is recognized by the U.S. Secretary of Education and is the only specialized accrediting agency for English language programs in the United States.

Our Mission

The mission of Converse International School of Languages (CISL) is to help our clients learn to communicate effectively and with confidence in English.

With over 50 years of experience, Converse International School of Languages (CISL) is a leader in English language training.



In today's world, the ability to communicate effectively and with confidence in English is often necessary for professional and academic success. Our experienced instructors help identify students' needs and challenge them every day to maximize their learning potential in a friendly, stimulating environment. Our school offers:

- Seasoned and dedicated teachers focusing on providing top quality language and cultural skills for our students.
- Small classes and individual attention (maximum of four students for Premier programs and a maximum of eight students for all other programs)
- Modern school located in exciting urban environment
- The CISL Interactive Teaching Method is used to facilitate communicating effectively and with confidence in English
- Levels from Basic to Proficient
- Motivated students from all over the world (diverse mix of nationalities)
- Accommodation placement options (homestay and student residences)



General English Courses

Our integrated curriculum combines grammar, vocabulary, reading, writing, listening, and speaking instruction.



STANDARD ENGLISH COURSE

The goal of the Standard English Course is to help students use English with accuracy and confidence. Students improve their general English language skills and, just as importantly, they learn how to be better communicators, how to use English in different situations, how to interact with people from different cultures, and how to be better language learners.

- 20 lessons per week
- Prerequisite: 10% or higher on placement test

Standard English Plus (FI only)

- Standard class plus self-study Study Hall class
- 21.8 lessons per week
Monday – Friday, 9:00 a.m. – 12:40 p.m.
Wednesday, 1:30 p.m. – 3:00 p.m.

INTENSIVE ENGLISH PROGRAM

The CISL Intensive English Program gives students the opportunity to improve their general English skills in the morning and focus on specific content or skills in the afternoon. Students take the Standard English Course in the mornings and take the afternoon elective course of their choice.

- **Morning Course**
Standard English Course
- **Afternoon Elective Course Options**
 - Conversational English
 - Business English
 - English for Academic Purposes (EAP)

! Course Schedules

Standard English:

- Monday – Friday,
9:00 a.m. – 12:40 p.m.

Afternoon Elective:

- Monday – Thursday
1:30 p.m. – 3:10 p.m.

PRIVATE LESSONS

Private lessons are based on the individual needs and goals of the student. Students may enroll solely in private lessons or add them to any other course

- Schedule: based on student and instructor availability.
- No proficiency requirement
- One student per class

Courses start every Monday. One lesson is 50 minutes. Minimum age is 17.



AFTERNOON ELECTIVE COURSES

Conversational English

The goal of the Conversational English Course is for students to become confident and fluent when using English in everyday situations.

Students in the course focus on building vocabulary and perfecting pronunciation with lessons that emphasize useful vocabulary, targeted pronunciation practice, and conversational application. Students will be able to use English to express ideas, give opinions, participate in conversations and have discussions with their classmates.

- Prerequisite: 10% or higher on placement test.

Business English Course

The goal of the Business English Course is for students to learn how to use English to communicate effectively in business settings. Students learn communication skills required in business settings, how to confidently discuss popular topics in business, and how to communicate with business people from other cultures with tact.

- Prerequisite: 70% on placement test

English for Academic Purposes (EAP)

The goal of the EAP Course is to give students the writing skills necessary to enter and succeed in a college or university level course in the United States. Students must complete all seven projects in order to receive a certificate for the course and be eligible to transfer to a pathway college. However, any student could enroll for one or more weeks for help with writing without receiving a certificate of completion.

- Prerequisite: 70% on placement test

! Afternoon Elective Course are:

For F-1 visa students who need to study full-time with morning and afternoon classes, or for part-time ESTA/ B2 visa students who only want to take afternoon classes.

- Monday - Thursday, 1:30 pm - 3:10 pm
- Maximum 8 students per class

“ I've been taking EAP for three months. It's very helpful for me. First of all, I improved my writing skills. I learned how to write a complete essay. I learned the whole process: to have a brainstorm before starting, to organize paragraphs and write coherently...”

EZGI, TURKEY



Exam Preparation Courses

Exam Preparation courses at CISL are designed to prepare students for success on internationally-recognized English exams.



CAMBRIDGE ASSESSMENT ENGLISH

The CISL Cambridge Assessment English Exam Preparation Courses prepare students to take Cambridge Assessment English exams to receive certificates verifying their English proficiency. Over 20,000 universities, employers, and governments around the world accept Cambridge English exams.

CISL offers preparation courses for FCE and CAE. We include practice speaking exams that mimic the actual exams conditions and give valuable feedback as well.

CISL San Diego is an authorized Cambridge Assessment English exam centre which allows students to take the official FCE and CAE exams with us in a safe and familiar setting.

Cambridge English: First (FCE)

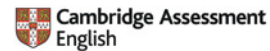
- Prerequisite: 70% on placement test
- 20 lessons per week
- 28 lessons per week
- 9 or 11-week courses with several start dates each year

Cambridge English: Advanced (CAE)

- Prerequisite: 90% on placement test
- 20 lessons per week
- 28 lessons per week
- 9 or 11-week courses with several start dates each year

Course Schedules

- 20 lessons per week:
Monday – Friday,
9:00 a.m. – 12:40 p.m.
- 28 lessons per week:
Monday – Friday, 9:00 a.m. – 12:40 p.m.
plus Monday – Thursday,
1:30 p.m. – 3:10 p.m.



Authorized Exam Centre

CISL San Diego is an authorized Cambridge Assessment English exam centre for PET, FCE & CAE



COURSE OBJECTIVES



Language Skills

Improve skills in listening, speaking, reading, writing and vocabulary.



Test Taking

Identify and understand different question types, learn tips for handling each section of the test, take practice tests to build familiarity with the test and track progress.



Academic English

Learn, practice, improve and use English in academic and professional business settings.

TOEFL PREPARATION COURSE

(Test of English as a Foreign Language)

The goal of the TOEFL Preparation Course is to prepare students to take the TOEFL iBT test by helping students build the skills necessary to successfully answer the questions and complete the tasks in the test, improve their general and academic English proficiency, and learn effective test-taking strategies.

The TOEFL is recognized by colleges, universities, and agencies in more than 130 countries around the world.

- Prerequisite: 70% on placement test
- 6-week course (4 weeks in summer)
Several start dates each year



Course Schedules

- 20 lessons per week
- Monday – Friday,
9:00 a.m. – 12:40 p.m.

IELTS PREPARATION COURSE

(International English Language Testing System)

The IELTS Preparation Course focuses on preparing students to take the International English Language Testing System (IELTS) exam by helping students improve their English proficiency as well as equipping them with effective test-taking strategies.

Students in the course will receive guided help in developing their academic skills in listening, speaking, reading, and writing for taking the official IELTS exam.

- Prerequisite: 70% on placement test
- 11-week courses with several start dates each year

“I started to understand much better than before and I feel more confident in English now. It was one of the best and practical learning in my life.”

TATIANA, RUSSIA



Academic Preparation



These unique programs prepare long-term, academic-focused students for success in English-speaking colleges and universities.

ACADEMIC YEAR PROGRAM (AYP)

The Academic Year Program (AYP) gives students the opportunity to improve their general and academic English skills at CISL and then attend a semester at Grossmont college in California with the guidance of an on-site AYP Coordinator. It is popular with recent high school graduates taking a gap year and with students who want to attend an American college for one semester.

Ambitious students who want to experience American college life can appreciate the adventure of studying in a college in a new country with the support of CISL along the way. CISL helps students to prepare for their semester academically, personally, and linguistically. Before their first college semester, students have made friends, honed their English skills, and received guidance from CISL staff. CISL students are able to enjoy their first American college experience without stress.

Students in the CISL Academic Year Program must study at least 16 weeks at CISL and enroll in one semester at a participating college. The specific CISL course plan depends on each student's language proficiency and goals, but most students take a combination of the following courses:

- **Morning Courses**
Monday – Friday, 9:00 a.m. – 12:40 p.m.
(Several course options; contact school for details.)
- **Afternoon Elective Courses:**
Monday – Thursday, 1:30 p.m. – 3:10 p.m.
 - English for Academic Purposes (EAP)
(minimum 12 weeks required)
- Prerequisite: 70% on placement test

CISL PATHWAY PROGRAM

The CISL Pathway Program offers international students the chance to study and obtain a degree at a U.S. college or university with the help of an on-site CISL Pathway Coordinator. This program is open to all CISL students who have completed the equivalent of a U.S. high school education and at least 12 weeks of a CISL morning class plus the 12-week CISL English for Academic Purposes (EAP) course. The CISL Pathway Program provides students access to its Pathway partners (oftentimes securing the student admission without submitting English proficiency exam scores, such as TOEFL or IELTS) but students must still apply for admission to the college or university. For a list of participating colleges and universities, see the box to the right.



Some of our Partner Schools Include:

- Alliant International University
(Multiple cities in California)
- American Aviation Academy
(San Diego, California)
- American National University
(Multiple cities in California)
- California College of the Arts
(Oakland and San Francisco, California)
- El Camino College *(Los Angeles, California)*
- Embry-Riddle Aeronautical University
(Campuses in multiple cities)
- Fisher College *(Boston, Massachusetts)*
- Full Sail University *(Orange County, Florida)*
- Indiana Institute of Technology
(Fort Wayne, Indiana)
- Lincoln University *(Oakland, California)*
- Los Angeles Film School *(Los Angeles, California)*
- Palomar College *(San Marcos, California)*
- Peralta Community College District:
 - Berkeley City College *(Berkeley, California)*
 - College of Alameda *(Alameda, California)*
 - Laney College *(Oakland, California)*
 - Merritt College *(Oakland, California)*
- New York Film Academy *(New York City, New York and Los Angeles, California)*
- Santa Barbara City College *(Santa Barbara, California)*
- Santa Monica College *(Santa Monica, California)*
- Seattle Central Community College
(Seattle, Washington)
- Southwestern Oregon Community College
(Coos Bay, Oregon)
- University of Houston-Victoria *(Victoria, Texas)*
- Whatcom Community College
(Bellingham, Washington)

Contact the school or visit our website: cisl.edu for a frequently updated list of partner schools.



Career English Program

Our Career English Program gives students the opportunity to improve their English in a real-life working environment while developing relationships with American colleagues.

PROGRAM OVERVIEW

Career English Program positions are unpaid and are focused on improving the student's English skills. This is not a job training program. Placement is subject to a successful interview. Students provide their top three choices of desired fields and should have prior education or experience in those fields. Specific fields/positions are not guaranteed.

“ I would definitely recommend CISL's Career English program to everyone. It was one of the most interesting experiences I ever had...”

YEIN, KOREA

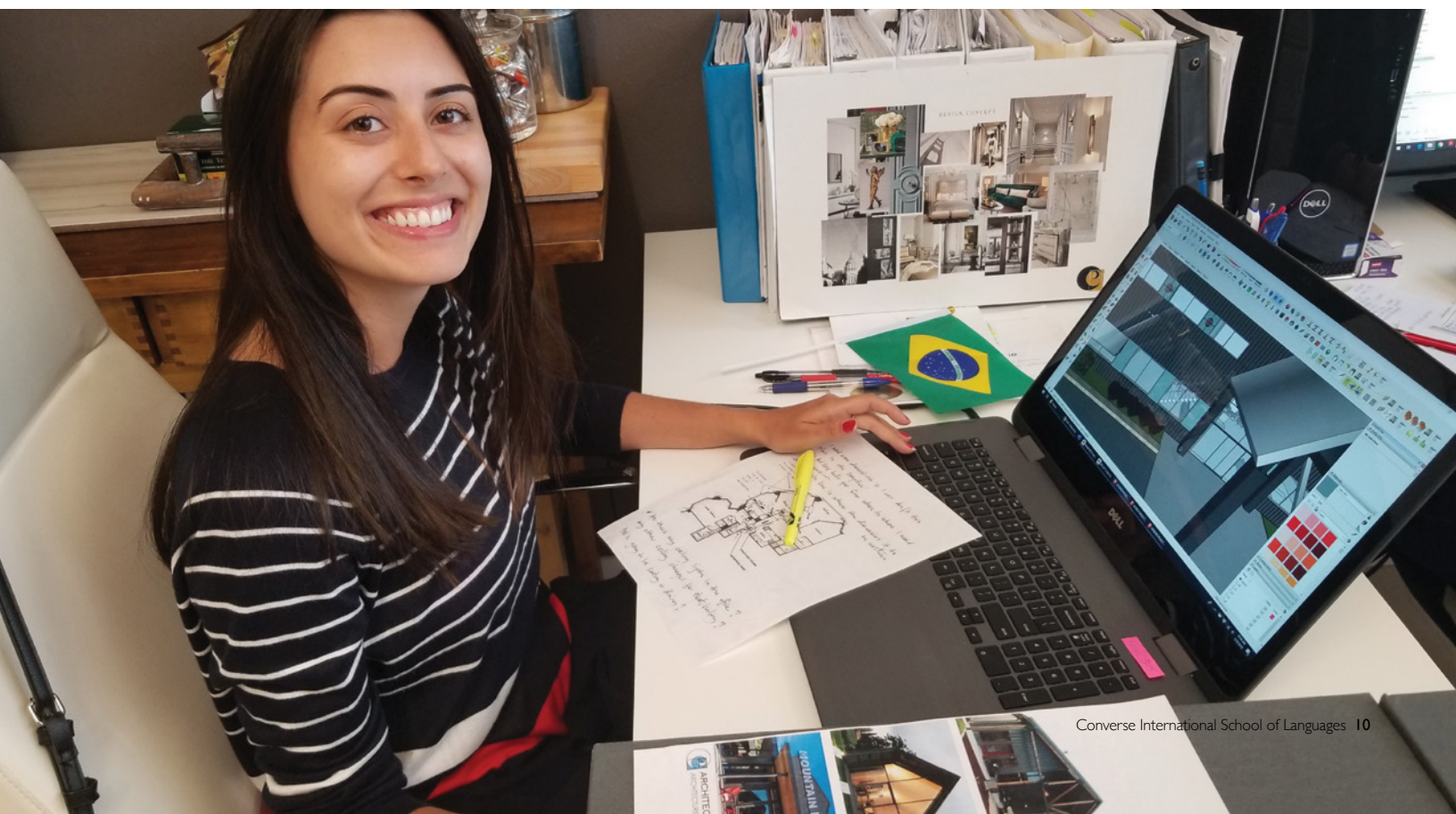
PROGRAM REQUIREMENTS

- Minimum English proficiency level of CISL upper intermediate (B2)
- At least one year of experience or education in the requested field

PROGRAM INCLUDES

- 6+ weeks of English classes followed by 6-8 weeks placement with a local business (program length: 12-14+ weeks)
- English proficiency/needs assessment via Skype prior to arrival
- Supervision by the CISL Career English Coordinator
- An official letter of recommendation upon successful completion of the course
- Certificate of completion showing company's name

Note: Placement between December 15 and January 15 is limited.



Premier English Program

English Language Training for Executives, Professionals
and Ambitious Learners



PROGRAM OVERVIEW

The Premier English Program is designed for motivated students and business professionals who want to focus on the skills needed to effectively conduct business in English. The classes are very small; students can enroll in either group classes with 4 students maximum or private lessons in order to benefit from the highest level of attention and involvement in the class activities.

Courses are designed to address a variety of real-life business situations, as well as each student's specific needs and goals. Our dedicated instructors are experienced in both English as a Second Language education and the business world, and will challenge and guide the students through this rigorous program. Students with English levels elementary to advanced are accepted.

** Morning classes have a maximum of 4 students per class. Afternoon group classes have a maximum of 8 students per class.*

COURSE OPTIONS & SCHEDULES

Executive English

- Improve writing skills for business reports
- Gain confidence in giving presentations, conducting meetings, and handling negotiations
- Increase business and industry-based vocabulary

Executive English Intensive

Includes: Morning Executive English Course + Afternoon Elective (more information on page 5)

- Business English
- Conversational English
- English for Academic Purposes

! Course Schedules

All programs (except Executive English Intensive) are:

- 20 lessons per week
- Monday – Friday, 9:00 a.m. – 12:40 p.m.

Executive English Intensive Afternoon Elective:

- Monday – Thursday 1:30 p.m. - 3:10 p.m.

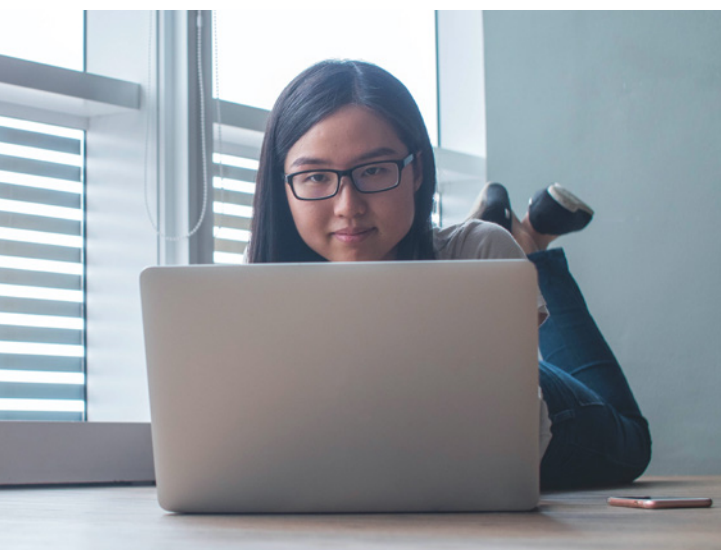


“An opportunity to communicate with interesting business people, including the teacher.”

CONSTANTINE, RUSSIA

CISL Online Private Lessons

CISL's online platform is designed to give you the personal attention of a live class along with the flexibility and convenience of an online course.



COURSE HIGHLIGHTS



Interactive

Highly interactive student-teacher engagement; students receive immediate teacher feedback



Engaging

Lively discussions on current topics



Effective

Our virtual classroom is unique and was created especially for teaching English so you achieve your goals

PRIVATE COURSES

(no minimum level required)

Possibilities include:

- Private courses can be arranged to accommodate local time zones.
- English for Beginners (pre-B1)
- Business English
- Cambridge Assessment English: 4 week course
- TOEFL - 8 week course
- Premier Courses including Global Success, Executive English, English for Engineers, Aviation English
- Conversation Practice
- Presentations in English
- English for Academic Purposes (EAP)
- Aviation English
- Medical English
- Professional Travel and Tourism Customer Service
- Global Success and Executive English

“The city is wonderful, where you can visit a lot of beautiful places and meet a lot of people. I had received recommendations from 3 friends who have studied here, and they were right ; It is probably the best school in SD. During these 5 months, I definitely improved my English, because of the lesson’s quality and the availability of the staff when you want to practice your English.”

ANTHONY, SWITZERLAND

San Diego, California

Come discover why San Diego is one of the most desirable cities in the world!

With its wonderful climate, sunny skies, and beautiful beaches, islands, and peninsulas, this modern, safe, and clean city attracts people from all over the world. San Diego’s warm weather allows its residents to enjoy outdoor sports, such as golf, tennis, sky-diving, surfing and sailing, year-round.

The CISL San Diego campus is conveniently located in the city center near public transportation. Just a short walk from the school is picturesque San Diego Bay. Stroll along the Embarcadero and enjoy the view of beautiful Coronado Island. Our school is only a short walk to the Horton Plaza shopping district, the historic Gaslamp Quarter, and the San Diego’s baseball stadium, Petco Park. Balboa Park and the world famous San Diego Zoo are also nearby.



Activities

Socializing and immersing oneself in a new culture are two important parts of the Converse International School of Languages total learning experience.

We encourage our students to make friends and practice their English while participating in activities and social excursions, which is why the CISL campus has an Activities Coordinator available at school every day to answer student questions and help them plan their adventures. We offer many after-school and weekend activities for our students.

ACTIVITIES INCLUDE*

- Afternoon activities
- Cultural activities
- Sports activities
- Weekend excursions
- Volunteer activities
- Sporting events



Interesting weekend excursion destinations include:

Las Vegas

Grand Canyon

Hollywood

Disneyland

Yosemite National Park


San Diego Zoo

* Visit cisl.edu to download the monthly activity calendars.

“It was always my dream to go surfing. Finally, I was able to learn. I made many friends.”

DANIEL, VENEZUELA





“ My homestay family is lovely. The school is centrally located. I have met a lot of new friends and the teachers are very helpful. I like San Diego very much. I am happy to be here!”

NADIA, SWITZERLAND

Accommodations

We offer our students several housing options to help them find the accommodation that best suits their needs.

Students can choose to immerse themselves in daily American life by living with a host family, or they can choose to be more independent and live in a student residence club, apartment, or hotel.

Homestay

- Develop a relationship with an American family
- Meal options: breakfast and dinner or breakfast only
- Private or shared room

Student Residence

- Live with other students
- Private or shared rooms and bathrooms

Hotels*

- High level of comfort

* Hotels must be booked directly, not through CISL.



Pacific Beach, San Diego



Coronado, San Diego



San Diego Trolley

Additional Information

SCHOOL FACILITIES

- 18 classrooms
- Student Lounge
- Computers for student use
- Free wi-fi

INFORMATION

A Student Services Coordinator is available at the school to answer student questions about shopping, local activities and events, weekend travel, nightlife, local customs, medical service, etc.

CAMBRIDGE ASSESSMENT ADMISSIONS TESTING

For students who are applying to universities in the UK and need an admissions test, we offer the BMAT, MAT and a variety of other admissions tests.

STUDENT VISA ADVISING

CISL is authorized by the United States Immigration Service to issue the Form I-20. Students will need this form to apply for a student visa. Our admission advisors will be happy to answer questions regarding student visa requirements. More information is available on our website: cisl.edu

AIRPORT TRANSFER

CISL can arrange transfers to and from the San Diego International Airport. Students will be greeted by a professional driver and taken to their residence. If a student has reserved a host family accommodation and is arriving on the weekend during specified hours, the host family will pick up the student from the airport if the flight lands between 9:00 and 21:30.





Converse

International School of Languages

CISL ADULT PROGRAMS
636 Broadway, Suite 210
San Diego, California 92101
U.S.A.
Ph. +1 619 239 3363
Fx. +1 619 239 3778
info@cisl.edu

cisl.edu