

MIT
INSTITUTE



SYDNEY

The perfect place to learn English.

– TOURIST ATTRACTIONS

The Sydney Opera House with its unique sails was designed by Jorn Utzon, a famous Danish architect. Together with the Sydney Harbour Bridge, it is the most well known symbol of Sydney. It is located at Bennelong Point. It was completed in 1973 after 14 years of construction.

The Harbour Bridge is a spectacular sight. You can experience it all on the stunning Bridge climb tour, which is popular with not only tourists but locals as well.

There are also many beautiful beaches. Whilst Bondi Beach is the most famous beach in Sydney, there are many other beaches located to the north and to the south of the centre of the city. They are all accessible by public transport. Sydney really is an excellent city for surfers.

But if you're not into surfing, then there is still something for you at the beaches, too. Most beaches have attractive cafes and restaurants which serve delicious food.

You can also enjoy national parks such as the Blue Mountains with its stunning scenery or the white sandy beaches at Port Stephens or even catch a train and go to Morisset to see some wildlife.

– CLIMATE

There are four beautiful seasons in Sydney.

Summer is not too hot and winter is not too cold. The climate is mild throughout the rest of the year. If you take a look at any photo of Sydney, you'll notice how beautiful and blue the sky is! You will feel that the weather in Sydney is mostly sunny!



– ACCOMMODATION OPTIONS

You can find suitable accommodation, such as Homestay or Share House through our college. However, there are also some other accommodation options that you can pursue by yourself. These include arranging your own homestay, finding a place to live in the private rental market online, or through real estate agencies, who can give you a good idea of the type and cost of accommodation that is available.

– LIVING COSTS IN SYDNEY

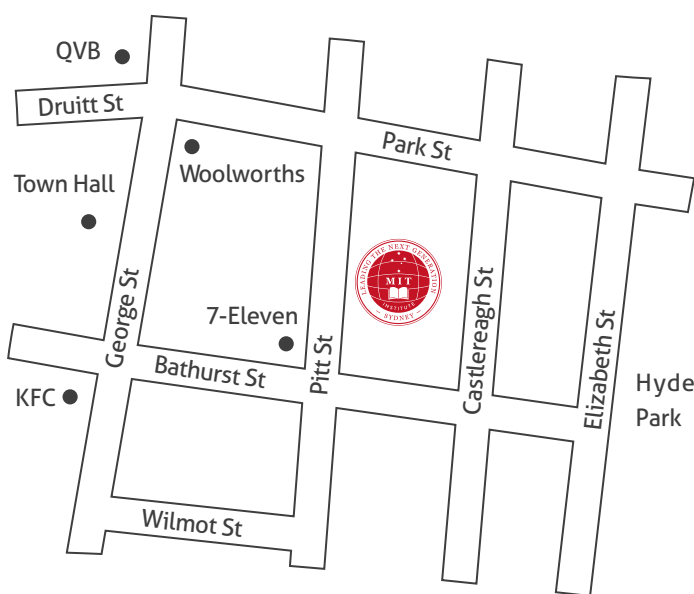
Before you come, you should be aware of how much it will cost you to live and study in Australia. On average, you should expect to pay about \$300 per week for your living expenses because you will need to pay for your rent, food, transport, etc. (This is only an average cost; depending on your personal needs and circumstances.)





OUR SCHOOL

Established in 2006, MIT Institute provides a modern education experience, employing proven methods of teaching to ensure students obtain the best possible outcomes from their efforts. Our mission is to help people reach their maximum potential as language learners. We aim to do this by providing a wide variety of courses and study options that take into account students' previous language learning experiences, students' own cultural backgrounds and students' future plans. Student progress is carefully monitored so that they receive all the support they need.



– OUR LOCATION

MIT Institute is conveniently located near Sydney's Town Hall, right in the heart of the Central Business District. It can be easily reached by public transport.

There are plenty of food courts, shopping centres, banks and restaurants close to the school. MIT Institute is also within close walking distance of many famous tourist attractions including the Queen Victoria Building, Darling Harbour, the Sydney Opera House and the Sydney Harbour Bridge.



CHECK OUR ADDRESS ON YOUR GOOGLE MAP!

Address: Level 9/280-282 Pitt St, Sydney, NSW 2000 TEL: (61) 2 9267 5777

– ABOUT US

At MIT Institute we know that learning English is a journey best taken in small steps. Challenges, fun and a sense of satisfaction are commonly found in our classrooms and it would be our pleasure in helping you navigate your way forward in the English-speaking world. With our ten-year experience in providing English to students from all over the globe, we are perfectly suited to make your study experience at our Institute, memorable and enjoyable. Pride in our teaching team, friendly staff members, dynamic learning atmosphere and interesting courses ensure that you will definitely find studying at MIT Institute will meet your expectations and lead you to an exciting future. MIT Institute hopes to take this first and most important step with you and so we welcome you warmly and look forward to seeing you soon.

MESSAGE FROM OUR DIRECTOR OF STUDIES



JULIA SAWYER
DIRECTOR OF STUDIES

Welcome to MIT Institute. We pride ourselves on our family environment and atmosphere as we are all working together toward the goal of improved language skills! We have an excellent team of teachers and administrators that are here to help you get the most out of your experience in Australia. We believe that by becoming a part of the culture, your language will improve and that the better your English is, the better you can immerse yourself in the culture: they go hand in hand. Even though learning a new language is challenging, our skillful teachers have great methods to help you improve. We focus all our experience and dedication into helping you become the best. Communication is key to today's world and our job is to help you communicate with that world. We aim to provide you with an excellent experience from first contact to the last by providing excellence in everything we do. We are here to make your experience in Australia a happy and productive one, from airport pick-up and accommodation, to teaching and classroom experience. All our staff are here to lead you to the right path, to your best tomorrow, and we can do this because of our helpful attitude, skill, and knowledge.



- FACILITIES

✓ Modern Classrooms with Air-conditioning

✓ Computer Room

✓ Student Lounge and Common Room

✓ Kitchen and Lunch Area



Free Student WI-FI



Computer



Projector



Refrigerator



Microwave



- ACCOMMODATION

MIT Institute can arrange homestay accommodation, share house and student dormitories for you; or alternatively, you can find your own.

Sharing accommodation is very popular with students in Sydney, so there are often share flats and apartments advertised on college notice boards, the internet and in newspapers.

– SERVICES

A close liaison between staff and students ensures that students receive individual care and attention. Our experienced staff understand the difficulties students living abroad face, and are ready to help. Students can expect to receive correct advice on things like health services, welfare, accommodation and employment.



ACADEMIC SUPPORT AND COUNSELING

ACCOMMODATION PLACEMENT

DISCOUNTED ACCESS TO SMSA LIBRARY

PATHWAYS FOR VOCATIONAL SCHOOLS

TRANSPORT INFORMATION

MEDICAL SERVICE INFORMATION

INFORMATION ABOUT MOBILE PHONES
& BANKING

EXCURSIONS AND SOCIAL ACTIVITIES
IN SYDNEY

STUDENT ID

– STUDENT SATISFACTION

A survey from NEAS, an external quality assurance body, revealed that the student satisfaction rate for our school is one of the highest in Australia.



STUDENT
SATISFACTION



– TEACHING METHOD

- Student-centred
- Communicative Language Teaching
- Task-based Learning

EXPERIENCED TEACHERS

Our enthusiastic teaching team, friendly staff members, dynamic learning atmosphere and interesting course content ensure that you will definitely find studying at MIT Institute meets your expectations and leads you to an exciting future.

EXPERIENCED, QUALIFIED AND SKILLED TEACHERS



LEVELS

CEFR	A1	A2	B1	B1+	B2	C1
IELTS				4.0-4.5	5.0-5.5	6.0-6.5
General English	Beginner	Elementary	Pre Intermediate	Intermediate	Upper Intermediate	Advanced
Academic English					Foundation in IELTS	EAP & IELTS Preparation
Cambridge English	Progress Testing Every 5 Weeks				FCE Preparation	
Medical English						OET Preparation

Some courses may not always be available due to the demand.

Tests at MIT

Your learning progress matters to us.

It is very important to check the progress of your English skills. MIT institute provides three different level tests to determine your level of English at each stage and to monitor your progress throughout your studies.

► PLACEMENT TEST (student entry level check test at orientation)

- All new students have to do an entry level check test during orientation - [Reading, Listening, Writing and Speaking](#)
- The Director of Studies checks the results of these tests and works out the most appropriate level and class for you.
- If you feel the class level is too low or too high, please talk to your teacher.

► UNIT PROGRESS TEST (weekly monitoring)

- [Unit Progress Test every week of term](#)
- This is to help you revise the week's lesson.
- Tests will be checked in class so you can get an idea about your progress and understand your errors.

► TERM TEST (every 5 weeks monitoring)

- [Term test on the first day of week 5](#)
- This is to see if you are ready for the next level, or higher courses including FCE, IELTS/EAP or OET.
- You will be given the results on Wednesday or Thursday in class.
- At this time, your teacher will let you know if you are progressing or staying in the same level.

TIMETABLE

MORNING (8:30 – 14:30)

	Monday to Thursday
8:30-10:00 (Regular Classes)	1st Session
10:10-11:40 (Regular Classes)	2nd Session
Lunch	Lunch
12:20-13:20 (Regular Classes)	3rd Session
13:30-14:30	S.F.Ms

EVENING (16:30 – 20:50)

	Monday to Friday
16:30-17:30	S.F.Ms
17:40-19:10 (Regular Classes)	1st Session
19:20-20:50 (Regular Classes)	2nd Session

ENGLISH COURSES

MIT Institute offers a variety of courses and our course system allows you to make your own tailored courses according to your individual needs and interests. You may choose your regular classes based on your goals and different Special Focus Modules will be provided based on your needs.

– REGULAR CLASSES

All the courses follow a textbook. Teachers will also provide you with other material like different textbooks, films, websites and, sometimes, they will take you on excursions to places that are related to the topics or themes you are studying. You will usually have one or two teachers for regular classes, and different teachers for Special Focus Modules. Regular classes run four days a week in the morning and five days a week in the evening, and the teachers will work closely with you to make sure all aspects of your language development are covered. Progress tests will be conducted regularly with a full term test every five weeks. However, some classes and levels will only be available upon demand.

- General English
- Foundation in IELTS
- EAP & IELTS Preparation
- Cambridge FCE Preparation
- OET Preparation



Special Focus Modules (S.F.Ms)

All students have four hours a week of Special Focus Modules. This helps you learn in various areas of English. Special Focus Modules include: conversation, current affair discussion groups, listening, reading, writing, grammar, pronunciation and so on. Special Focus Modules run depending on demand. In this class, you have a new topic appropriate to your level and your teacher changes for this hour. You have the opportunity to do each of the modules at least once every two weeks.

– KEY FEATURES

- 1 Students are exposed to a different Focus Module every day or two in order to provide the greatest possible grounding in each particular skill.
- 2 Each one-hour class provides a fun way for students to socialize with their classmates in a supportive atmosphere without the constraints of the syllabus in order to broaden their contact with the greatest level of English learning.
- 3 The flexibility of our classes and teachers combined with the wide range of different topics and modules allows all our students to quickly and effectively improve the skills which are most important to their needs.
- 4 The particular modules taught at the time of study are dependent on availability and demand, but there are enough modules for a full rotation at least once a week.
- 5 Students have the chance to learn with different teachers and experience different accents and teaching styles during the Special Focus Modules.

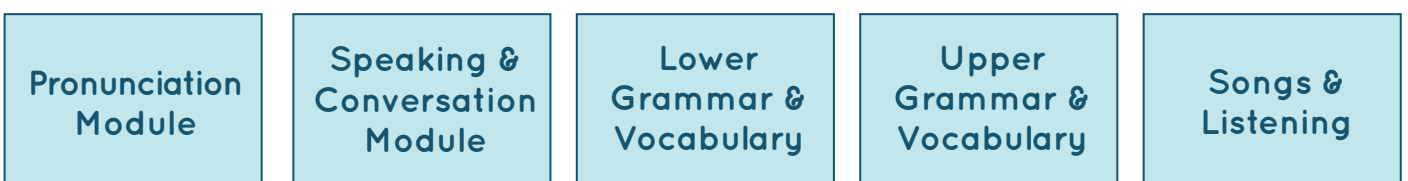
– POPULAR MODULE

Critical Thinking & Communication (TED Talks)

This class is available for various levels. It is an opportunity to improve your listening skills and use your English for communication and critical thinking. This class is an excellent way to use English in a natural and relevant manner.



– OTHER REGULAR MODULES



GENERAL ENGLISH

(Beginner to Advanced)

CRICOS Course Code: 0101595

Course Length : 2 – 52 weeks

Enrolment : Any Monday

Entry Requirement : None

– ABOUT COURSE

This is the course where students usually start from. This course covers the four areas of General English skills (Speaking, Listening, Reading and Writing) and helps you develop the skills required for each level.

Students improve their ability in:

- understanding spoken English.
- communicating in common situations by using functional language and appropriate vocabulary.
- reading and understanding high frequency vocabulary and simple sentences.
- writing paragraphs with accurate spelling and punctuation, as well as understanding and using accurate grammatical structures.

– WHY STUDY THIS COURSE AT MIT?

- We offer Beginner to Advanced levels (A1/A2 to C1+ on the Common European Framework).
*We aim to offer up to six levels, so that you can study with other students at a similar level to you.
- The course materials and content are authentic so you can apply them to your real life immediately, which enhances your learning speed effectively.
- Excursions, including local activities (i.e. Vivid Sydney), films, speed dating, and sightseeing will expand your knowledge and vocabulary and you can use the language learnt at events in many social situations.

► Model Lesson Plan - Intermediate

VOCABULARY <ul style="list-style-type: none">- Retelling the story- Phrasal verb stories- Flashcards- Using Dictionary	READING <ul style="list-style-type: none">- Reading for gist and details- Text organisation- Newspaper headlines- Reading books	GRAMMAR <ul style="list-style-type: none">- Verb Conjugation- Tense Review- Conditional Statements- Reported Speech
WRITING <ul style="list-style-type: none">- Creative writing- Criticizing Books- Process writing- Complex Sentence	SPEAKING <ul style="list-style-type: none">- Listen and draw- Idiomatic Expression- Brainstorming- Pronunciation	CULTURE <ul style="list-style-type: none">- Travel Vocabulary- Discussing Culture- Cultural etiquette quizzes- Readings about Globalization

FCE Preparation

CRICOS Course Code: 080079C

Course Length : 2-16 weeks

Enrol : Any Monday

Entry Requirement : Pre-entrance test or Intermediate Level (IELTS 4.5 - 5.5 equivalent)

– ABOUT COURSE

If your answer is “ Yes ” to one or more of the questions below, you should consider FCE Preparation at MIT!!

- Do you feel that your English is fairly good, but hasn't improved beyond the level of day - to - day communication?
- Do you want to use English as an effective tool for better employment?
- Do you simply want to keep studying English, but want something other than General English?

FCE Preparation is for students of intermediate (B1 in Common European Framework) level which aims to prepare students for the Cambridge ESOS exam, First Certificate (FCE).

– WHY STUDY THIS COURSE AT MIT?

It prepares students for the exam with the necessary skills and accuracy in English. Close liaisons between staff and students ensures individual care and attention. Our experienced staff members truly understand the difficulties students face and possess the expertise to help you move forward.



Foundation in IELTS (Intermediate)

CRICOS Course Code: 060123C

Course Length : 2-12 weeks

Enrol : Any Monday

Entry Requirement : Pre-entrance test or Intermediate Level (IELTS 4.0 - 5.0 equivalent)

– ABOUT COURSE

Don't be scared by the word "IELTS", as this course is the perfect transition to Academic or Professional English. This course provides a comprehensive introduction to higher level English language courses which are becoming more and more popular and necessary every year, such as Cambridge FCE, IELTS, EAP and Advanced level General English courses.

– WHY STUDY THIS COURSE AT MIT?

- The fundamentals of writing in English, used in both the university and business sectors.
- The differences between formal and informal English and how to transition between the two depending upon the needs of the writer and the audience.
- More vocabulary focusing on the most important words and phrases commonly used in English tests, highlighting the various language influences (e.g. French, Latin and Greek) in formal English
- Phrasal verbs and their use in spoken English
- Exam reading skills, such as skim reading and scan reading within a wider context compared to General English.



English for Academic Purposes (EAP) & IELTS Preparation

(Upper Intermediate to Advanced)

CRICOS Course Code: 073467E

Course Length : 2-20 weeks

Enrol : Any Monday

Entry Requirement : Pre-entrance test or Upper-Intermediate Level (IELTS 5.0 - 6.5 equivalent)

– ABOUT COURSE

In this course, you will:

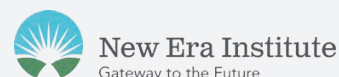
- learn English and at the same time prepare for your future studies. This includes academic skills such as presentation and research, on top of the English language itself. You will be able to increase your listening and speaking competencies for academic studies. You will practise reading academic topics and completing academic tasks and assignments. The course will help you with your further studies.
- Receive a lot of information you need in order to get the best IELTS score. This includes techniques to work within time limits, expand your vocabulary needed for academic English (especially for writing), knowing how to avoid silence in the speaking test, and studying how to tackle common traps in reading and listening.

– WHY STUDY THIS COURSE AT MIT?

- Spot-on practice - e.g. “ How to avoid the same words in writing.”
- Interactive - e.g. listening and speaking activities with the latest current affairs TV programs.
- Quality - all students must meet the entry criteria.
- Teacher - an expert who holds relevant degree qualifications.

▶ PATHWAYS

Successful completion of our EAP & IELTS preparation course allows you to enter our partner college without doing an IELTS Test.



OET Preparation

(Upper Intermediate to Advanced)

CRICOS Course Code: 0100126

Course Length : 6-12 weeks

Enrol : Every 6 weeks

Entry Requirement : Pre-entrance test or Completion of
Upper-Intermediate Level
(IELTS 6.5 equivalent)

– ABOUT COURSE

This course is for you if:

- You are an overseas qualified healthcare professional
- You want to study Medical English and enhance medical communication skills
- you need an OET score for visa, qualification or education purposes
- you have good everyday English but want to be a more sophisticated user of English in medical environments.

In this course, you will learn English to enhance your communication skills so that you can better participate in an English-language environment within a healthcare setting. The course also prepares you to undertake the OET test with confidence.

The course aims to develop your skills in reading, writing, listening and speaking. Thus, each day focuses on one skill. Additionally, you will study grammar, allowing yourself to gain a better understanding of the use of certain structures. You will also be able to have the opportunity to expand your medical vocabulary.

You will regularly do mini-tests, complete a full test every 6 weeks, receive feedback on your progress and be given advice on areas you need to work on.

– WHY STUDY THIS COURSE AT MIT?

Our course curriculum is unique and effective because:

- this course has been built and developed by a team of experienced English teachers,
- the teachers have received training provided by Cambridge Assessment English, and
- our team has learnt from the experts of OET at events, such as English Australia and NEAS Conferences.





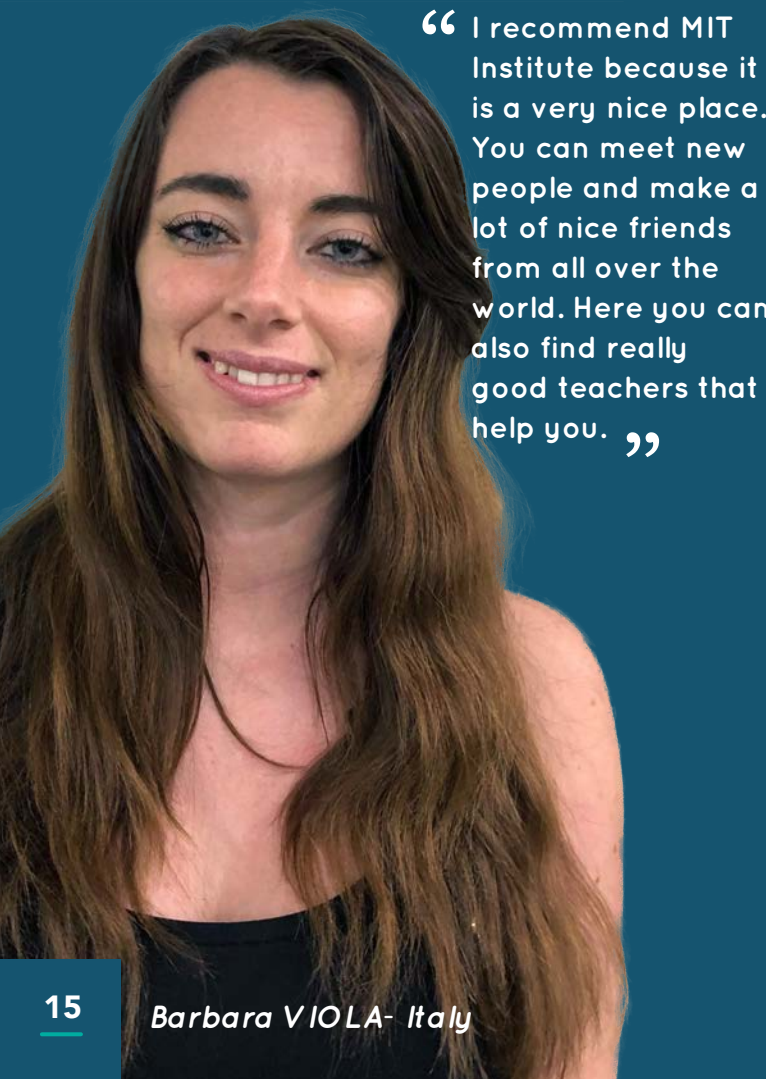
“ I really like this school because I feel comfortable in the classes. Also all teachers have a good way to teach and they are friendly. I got so much knowledge about English and I am making a lot of friends. The staff and the reception are very kind and friendly! ”

Yovie WIDIANTO - Indonesia

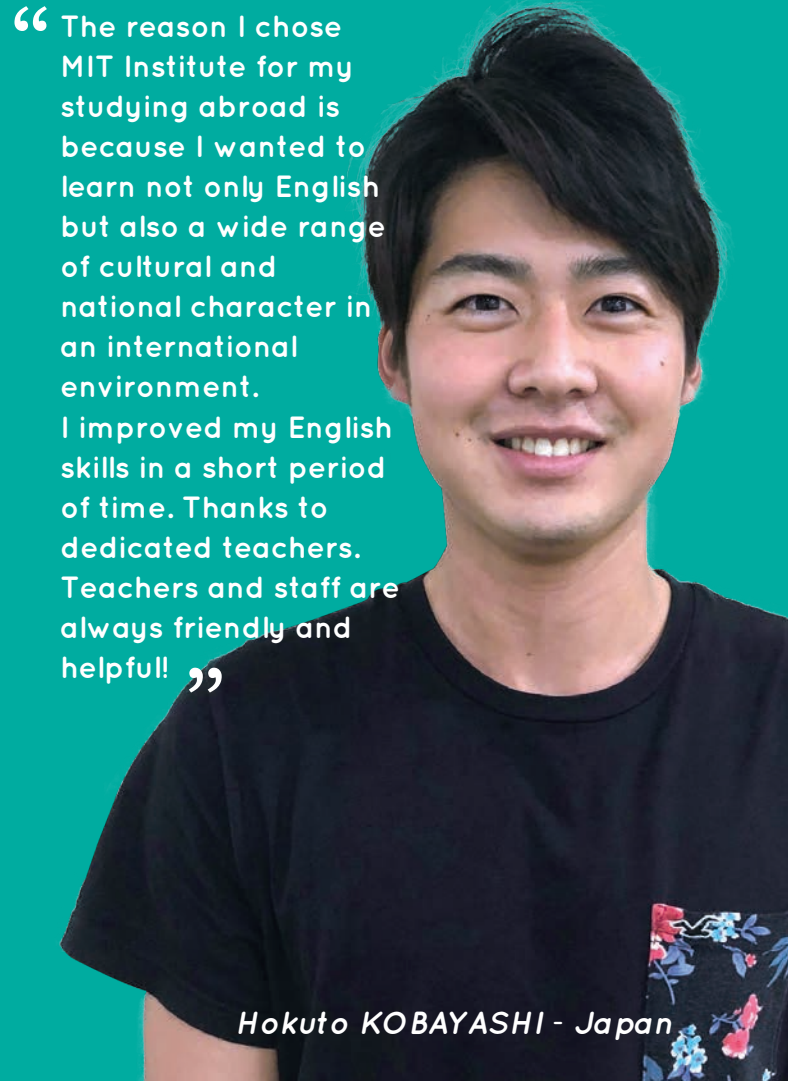


“ I am really happy with MIT Institute. During all the time that I studied here, I feel that I advanced a lot because of the different activities that the school has. I love the excursion and the teachers! ”

Gina AGUILAR - Colombia



“ I recommend MIT Institute because it is a very nice place. You can meet new people and make a lot of nice friends from all over the world. Here you can also find really good teachers that help you. ”



“ The reason I chose MIT Institute for my studying abroad is because I wanted to learn not only English but also a wide range of cultural and national character in an international environment. I improved my English skills in a short period of time. Thanks to dedicated teachers. Teachers and staff are always friendly and helpful! ”



“ I want to recommend MIT Institute which has a lot of friendly and smart teachers and staff. The school’s classes are very comfortable. Only a few students are studying in one classroom. I am really happy with MIT ”

Buyanlehisig SAINDWEREN- Mongolia



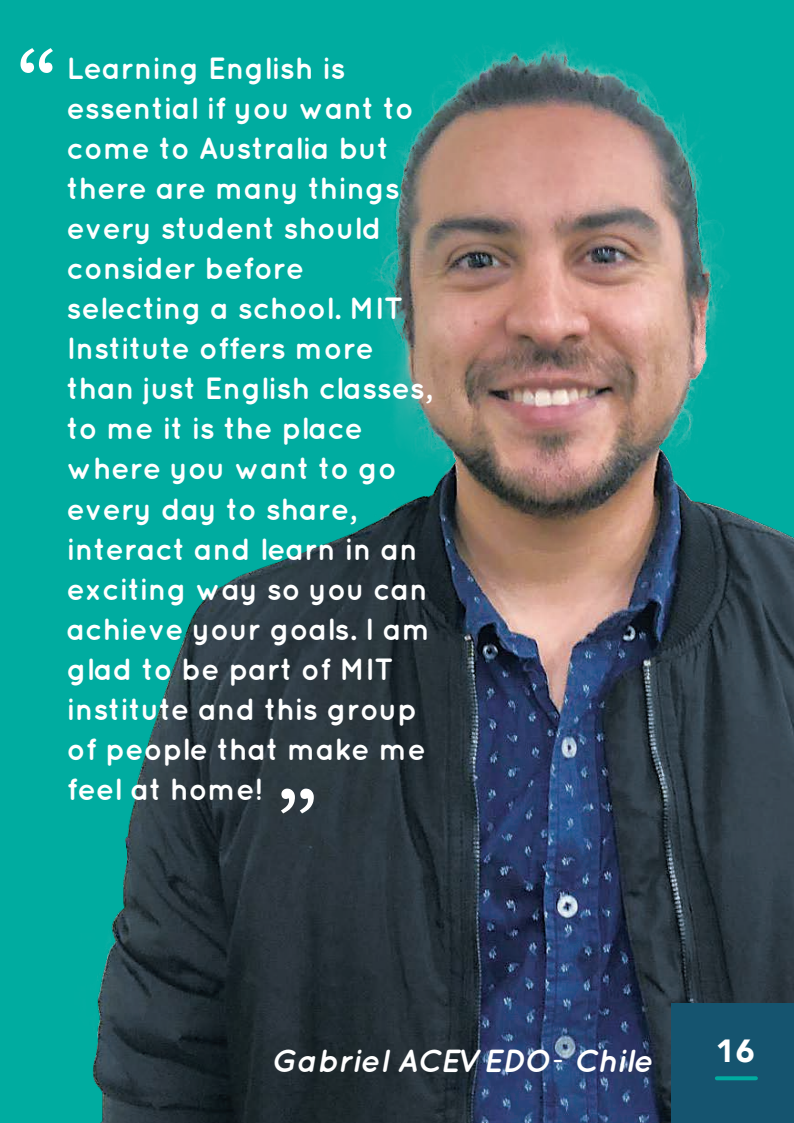
“ Coming to Sydney to study at MIT was one of the best decisions I have ever made. I could improve my English and expand my vocabulary with great professionals and in a very friendly environment. Also, I have to mention how great it was to study with people from all over the world. What an experience! ”

Paula Gabriela - Brazil



“ I was able to make new friends. All teachers are good. I felt they were always kind and caring for each student, also they prepare a lot of things for the class. Reception staff are really nice and they’re kind to me when I ask about my school life or problems! ”

Bugyung MUN- Korea



“ Learning English is essential if you want to come to Australia but there are many things every student should consider before selecting a school. MIT Institute offers more than just English classes, to me it is the place where you want to go every day to share, interact and learn in an exciting way so you can achieve your goals. I am glad to be part of MIT institute and this group of people that make me feel at home! ”

Gabriel ACEVEDO Chile

EXCURSIONS

MIT Institute offers excursions that include visits to the Sydney Aquarium, Powerhouse Museum, Hyde Park, New South Wales Art Gallery and Taronga Zoo among other famous sites. Our excursions have been very popular with all students who appreciate the opportunity to explore Sydney. Together teachers and students also celebrate special days and public holidays together, such as Halloween and Christmas, to increase cultural awareness.



INFO SESSIONS – EXTRA ACTIVITIES

► Conversation Club



► How to write a resume



► Interview Skills



► Pronunciation Club



► Biggest Morning Tea



► Valentine's Day



► International Food Day



► Halloween



LEADING THE NEXT GENERATION



ADDRESS: Level 7&9 280-282 Pitt St, Sydney, NSW 2000, Australia

TEL: (61) 2 9267 5777

EMAIL: info@mitinstitute.nsw.edu.au

www.mitinstitute.nsw.edu.au

MIT Institute Pty.Ltd. CRICOS Provider Code: 02778M



MIT Institute is accredited by the National ELT Accreditation Scheme