



Academic Course Guide 2023

Crossing Language Barriers

Over 50 years of experience



Table of contents

Our School.....	1-6
my.inlingua & Mini-Stay Programmes.....	7-14
Academic Pathway Programmes.....	15-18
Long Stay Programmes.....	19-22
Accommodation.....	23-30
Social Activity Programmes.....	31
Take Note.....	32
Terms & Conditions.....	33-34



About inlingua Malta

Malta is the home of everything British mixed with the Mediterranean charm of the Maltese Islands – a perfect fun-filled destination to learn English!

inlingua Malta is located in Sliema, Malta's most vibrant tourist destination! You can improve your English in one great location connected to all of Malta's main attractions and interesting locations. The school has 20 bright and comfortable high-tech classrooms, a student lounge, self-learning study rooms with materials and computers access as well as a student relaxation area close to reception. Free wifi is available throughout the school.

Our School:

- 20 air-conditioned classrooms all with Interactive Flat Panels
- Student lounge
- Lending library
- Wireless internet access
- ISO Certified - Quality assured
- FELTOM Accredited
- Authorised Cambridge Exam Centre
- Fully Accessible



Why choose inlingua Malta?

We form part of inlingua International, celebrating more than 50 years of experience in effective language training. inlingua is the largest association of privately-owned languages schools having 300 language centres in 37 countries worldwide.

Experience

inlingua Malta is the first language school on the island of Malta, established in 1980 and backed by 42 years of experience, we are trend setters in Malta's ELT industry! Our trainers are well experienced in teaching (Cambridge CELTA or DELTA qualified) and come from diverse backgrounds creating a pool of knowledge which is not restricted to language learning or linguistics. A number of our trainers have professional business experience and qualifications and understand the diverse linguistic needs of each student. Therefore, we can offer a tailor-made approach for every student to help them reach their goals.

Quality not quantity

We offer a personalized service where teaching standards are not compromised by quality and price. inlingua Malta is accredited by FELTOM and ISO21001, meaning our courses and the overall organization, is recognized as being of the highest standard. We have a strong international reputation for providing high quality language courses in a welcoming and professional atmosphere!

The inlingua Method

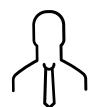
The inlingua Method is one of the key elements that contribute to learning success. It is based on decades of experience in language training and is continuously evolving to match the needs of a changing world. The three components of the inlingua method are:



Communication First



inlingua Learning Materials



Native Speaking Language Training

Continuous Worldwide Learning

Carry on learning online or at another center in your area using the same course book! With my.inlingua.com the possibilities are infinite. Online course work will supplement your lessons whilst face-to-face virtual classrooms will ensure that your learning does not stop! This blended learning experience can be tailored to create the optimal fit for the student looking for flexibility in their learning.



Location, Location, Location!

We are situated in a prime location within the touristic area of Sliema, with cafés, restaurants, retail outlets and leisure pick-up points right on our doorstep. It is the perfect base to visit all that Malta has to offer. The capital, Valletta is a 7-minute ferry ride across the harbor whilst direct transport routes will take you to Malta's iconic attractions.

Materials & Services



Print

inlingua Course Books are designed as support material for language training sessions. They are adapted to suit the level, language structure, vocabulary and topic of the learner's choice.



Audio

Each course book has audio exercises in the training session or for private practice. All audios are available for download on the inlingua website.

Online Test

inlingua offers free online language placement testing. The test can be taken at any time online, and it is non-binding. If you wish, your results can be sent directly to your center of choice.



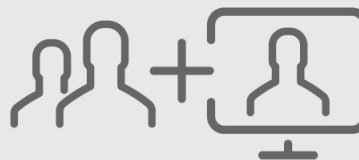
Virtual Classroom

The virtual classroom enables learners to learn anywhere, at any time. Lessons take place online with a teacher, and only require stable internet access and a computer with integrated audio and webcam.



inlingua Online Learning

iOL provides the opportunity to choose a customized learning path which meets individual needs and enables learners to continue learning outside the classroom.

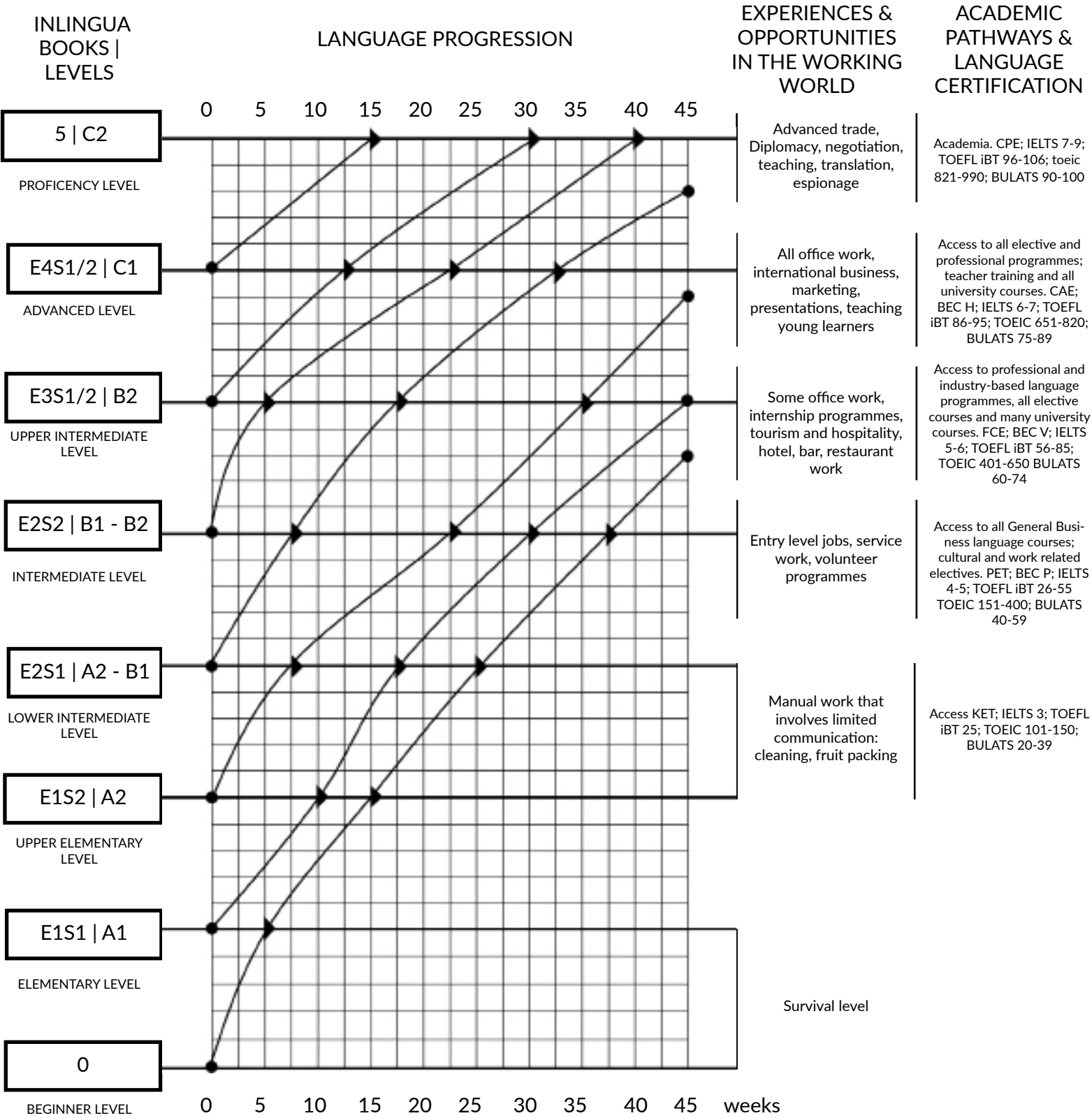


Blended Learning

Blended learning comprises the best of both worlds: in-class and online learning. The blended learning approach can be tailored to create the optimal fit for customers looking for flexibility in their learning.

Level Progression Chart

As you progress with the language, new doors will open for you... and stay open. Of course, the personal benefits of studying abroad go far beyond communication, but your new language abilities alone will give you a new world of opportunities. Add in the soft skills acquisition and life experiences that come with the programme, and your future is looking very bright indeed



These progression indicators are based on statistics with an average of 22 hours study per week and they depend on your personal commitment

inlingua Malta Programmes

inlingua offers a number of programmes across all levels of **CEFR** to meet the needs of its customers:

inlingua Online Programme – my.inlingua

Available for all course types, students can learn independently or complement their learning with online coursework and face-to-face virtual live lessons.

Mini-Stay Programmes

Includes General English, Junior and Teen English as well as Business English Programmes, aimed at individuals who want to gain the required confidence and language skills for everyday or professional life communication and fluency. Ideal for students studying for 1 to 7 weeks in a group or one-to-one class.

Academic Pathway Programmes

Includes all Exam Preparation Courses and combination package courses leading to an internationally recognized examination and qualification. Ideal for students who require a globally recognized qualification for future work or study purposes.

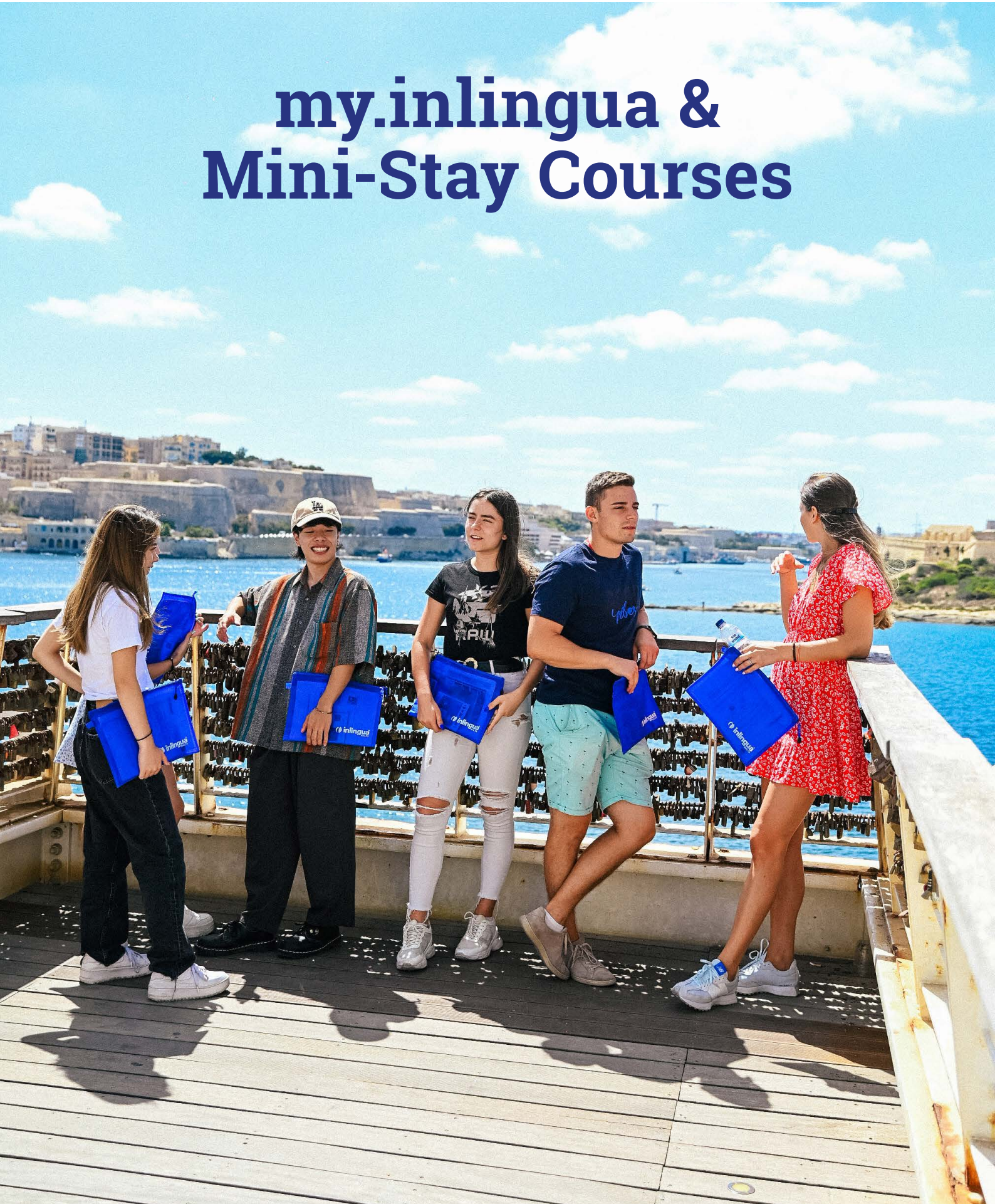
Long Stay Programmes

For those students who would like to see a drastic improvement in their level of English and want to spend 8+ weeks learning a language and gaining both written and spoken fluency.

All inlingua programmes are recognised by:



my.inlingua & Mini-Stay Courses



my.inglua - inglua Online Courses

inglua offers its students the possibility of blended learning – the chance to mix face-to-face classroom learning with online course work complimenting the inglua course book and language aims for each level. This can also be the perfect tool for those who wish to continue their studies from the comfort of their own home.

Tutor led Self-Study and Online Conversation Lessons

Our online learning tutor will assist you in completing your tailor-made coursework and will give you feedback on the work completed. After completing the online test and assigning an inglua level, the tutor will assign the right coursework, whether covering the General English or the Business English course book. Learners will also have the opportunity to choose the time and topic for 10 conversation lessons of a 50 minute duration. Conducted by an inglua International trainer correcting learners' spoken production of a maximum of 4 participants, these lessons are ideal for improving speaking skills and fluency.

	ACCESS DURATION	AREA OF STUDY	PRICE
inglua Online - General English	3 months	General English	180
inglua Online - Business English	3 months	Business English	180



- ★ ★ ★ ★ ★ C2 ★ ★ ★ ★ ★
- ★ ★ ★ ★ ★ C1 ★ ★ ★ ★ ★
- ★ ★ ★ ★ ★ B2 ★ ★ ★ ★ ★
- ★ ★ ★ ★ ★ B1 ★ ★ ★ ★ ★
- ★ ★ ★ ★ ★ A2 ★ ★ ★ ★ ★
- ★ ★ ★ ★ ★ A1 ★ ★ ★ ★ ★

Available at the following CEFR Levels:

Learning in a Group

English for Life

General English Course 20/30 : 15/22.5 hours per week

A perfect choice if you want to combine a language course with a relaxing, fun-filled holiday. Using the General English inlingua course book you will cover general topics of general interest whilst targeting everyday language aims through the learning of conversational English, grammar and vocabulary, and the four skills.

Business English Course 20: 15 hours per week

This course will teach you how to communicate effectively in a business environment. The inlingua Business Course book covers topics and language common to this field. Lessons are intense and focused and you will learn quickly in this highly charged environment.

English Junior 20 (Age 5-12): 15 hours per week

This course is designed specifically for children. Following the inlingua Junior Book materials, learning is more effective and much more fun through the use of visual props and exercises in the forms of games and activities. The child is encouraged to practice through participation and the trainer creates a positive atmosphere where students are confident and relaxed.

COURSES	HOURS PER WEEK	MINIMUM AGE	NO. OF STUDENTS IN CLASS	STANDARD	HIGH	*ONLINE LEARNING MY.INLINGUA.COM
General English 20	15	13+	10	200	235	180
General English 30	22.5	13+	10	250	295	180
English Mini Group 20	15	13+	6	300	-	180
English Mini Group 30	22.5	13+	6	375	-	180
Business English 20	15	18+	6	300	350	180
Junior English 20	15	5+	10	220	265	-

*Continue learning after your stay by including my.inlingua: 3 months activation with course work + 10 online conversation lessons for €180

Parent & Child Courses

Our junior courses offer English lessons for children starting from the age of 5. Parents can book any group course consisting of 20 lessons at the same time as their children.

Parents have peace of mind and can focus on learning knowing that their children are taken care of whilst learning English too! Parents and children attend the same school at the same time and enjoy their free time together too!

COURSES	HOURS PER WEEK	MINIMUM AGE	NO. OF STUDENTS IN CLASS	STANDARD	HIGH
General English 20 + English Junior 20	15 + 15	18+ & 5	10 + 10	420	500
General English Mini Group 20 + English Junior 20	15 + 15	18+ & 5	6 + 10	550	-
Business English 20 + English Junior 20	15 + 15	18+ & 5	6 + 10	550	645

*A1-B2 levels available for Junior Course. A1 - C2 levels available for Parent Courses.



★ ★ ★ ★
★ C2 ★ ★ ★ ★
★ ★ ★ ★
★ C1 ★ ★ ★ ★
★ ★ ★ ★
★ B2 ★ ★ ★ ★
★ ★ ★ ★
★ B1 ★ ★ ★ ★
★ ★ ★ ★
★ A2 ★ ★ ★ ★
★ ★ ★ ★
★ A1 ★ ★ ★ ★
★ ★ ★ ★

Available at the following CEFR Levels:

Learning One-to-One English for Work

inlingua designed a Crash Intensity Programme as a crash course for people who need to improve their general or business English skills significantly and in a short time! Private lessons are designed around your needs and interests whilst you will be encouraged to get actively involved in the learning process.

COURSES	HOURS PER WEEK	MINIMUM AGE	NO. OF STUDENTS IN CLASS	STANDARD	HIGH	*ONLINE LEARNING MY.INLINGUA.COM
CIP General English 10	7.5	5+	1	280	330	180
CIP General English 20	15	5+	1	540	640	180
CIP General English 30	22.5	13+	1	750	900	180
CIP General English 40	30	13+	1	800	1000	180
CIP Business English 30	22.5	18+	1	780	930	180
CIP Business English 40	30	18+	1	840	1040	180

*Continue learning after your stay by including my.inlingua: 3 months activation with course work + 10 online conversation lessons for €180

General English Combined

Make the most out of your time at inlingua Malta and follow this course to achieve optimum results rapidly and effectively. These courses combine, 20 group lessons with 10 one-to-one lessons targeting areas of your specific needs.

COURSES	HOURS PER WEEK	MINIMUM AGE	NO. OF STUDENTS IN CLASS	STANDARD	HIGH	*ONLINE LEARNING MY.INLINGUA.COM
General English Combined	22.5	13+	10 + 1	435	495	180
Business English Combined	22.5	18+	10 + 1	545	605	180
Junior English Combined	22.5	5+	10 + 1	465	525	180

*Continue learning after your stay by including my.inlingua: 3 months activation with course work + 10 online conversation lessons for €180

Student Travel Groups

At inlingua we welcome groups travelling together (10 persons +) under an all inclusive package tailor-made to each group's specific needs. With prices starting from as little as €300 per person for course, accommodation, inlingua course book, airport transfers and cultural visits we can find the right price for each group's needs whilst offering group coordinators complimentary services.



1 Week Sample Programme

DAY	MORNING	AFTERNOON	EVENING
Sunday	Airport welcome & pick up by inlingua personnel		
Monday	Registration at inlingua Malta & Welcome Activity	Lessons	Valletta by Night
Tuesday	Lessons	South of Malta Tour	Bowling
Wednesday	Half- Day Mdina Tour	Lessons	Free Evening
Thursday	Lessons	North of Malta Tour	Go Karting
Friday	Esplora Science Park	Lessons	Free Evening
Saturday	Full Day Gozo - Our sister island		
Sunday	Accommodation pick-up & Departure		

C2
C1
B2
B1
A2
A1

Available at the following CEFR Levels:

Teen Summer Programme

These programmes are all inclusive package programmes, a perfect choice for youngsters who want to improve their English but still enjoy a fun-packed holiday. Whether travelling to Malta with their family or independently, the following programmes are designed to ensure safety, learning and fun!

Totally Teens Package (Age 13-17)

Available 15th July - 13th August 2023

General English 20 Group course
 Welcome and Information Pack
 inlingua Course book
 Host Family Accommodation on Full-Board Basis (3 meals a day)
 Certificate upon course completion
 Student Travel Insurance
 Activity Programme (2 per day)
 Group Guides and Leaders
 Airport Transfers

2 WEEKS

1600

Active Teens Package (Age 13-17)

Available 15th July - 13th August 2023

General English 20 Group course
 Welcome and Information Pack
 inlingua Course book
 Certificate upon course completion
 Daily Lunch Pack
 Student Travel Insurance
 Activity Programme (2 per day)
 Group Guides and Leaders
 Airport Transfers

2 WEEKS

970

For teens travelling with family, we offer a pay-as-you-go option where teens may book a General English 20 or 30 course and choose to select and pay activities from the teen programme that they would like to attend (recommended for teens 16+)



2 Week Sample Programme

DAY	MORNING	AFTERNOON	EVENING
Sunday	-	Golden Bay	Sliema Evening
Monday	ilingua introduction	Lessons*	Welcome Party
Tuesday	Lessons*	Malta 5D + Ferry	Balluta Evening
Wednesday	Kayaking	Lessons*	International Party
Thursday	Lessons*	Go Karting	Cinema
Friday	Blue Grotto	Lessons*	Zumba
Saturday	-	South of Malta	Laser Tag
Sunday	-	Comino	Sliema Evening
Monday	Valletta Tour	Lessons*	Boat Party
Tuesday	Lessons*	Esplora Sceintific Park	Shopping by Night
Wednesday	Waterpark	Lessons*	International Party
Thursday	Lessons*	Harbour Cruise	Bowling
Friday	Sliema Beach	Lessons*	Beach Bonfire Night
Saturday	-	Riviera Bay	Malta by Night

* Lesson times and time-table may vary



Academic Pathway Programmes



Exam Preparation Courses

IELTS™

IELTS Preparation

IELTS is fast becoming one of the most important exams for English Language learners required by the UK and US universities who require this qualification from a designated SELT (Secure English Language Testing) centre such as Cambridge IELTS.

inlingua Malta's IELTS Preparation 30 Course combines improving your General and Academic English skills whilst perfecting your IELTS Exam strategies throughout the day.



Cambridge Assessment English

Cambridge FCE & CAE Preparation

Authorised Exam Centre

inlingua Malta is a preparation centre for many ESOL exams which provide a recognised English language qualification that are accepted by schools, universities and employers worldwide. You can prepare and take the exam at inlingua Malta.

The intensive Cambridge Preparation 30 course offers General English practice and improvement whilst combining and teaching the right exam strategies for each exam type.

Cambridge

Cambridge Authorised Centre

English Qualifications

inlingua Malta is a Cambridge Authorised Exam Centre which means inlingua students enjoy the comfort and benefit of studying and sitting for the exam in the same school. This also means our trainers are well used to the exam and can effectively prepare students for the exam. We hold Cambridge Exams in March, June, August and December.



Cambridge certificates are the most widely recognised qualification worldwide for English as a Second Language

Exam Preparation Courses

COURSES	HOURS PER WEEK	RECOMMENDED AGE	RECOMMENDED LEVEL	START DATES	LENGTH	PRICE
Cambridge B2 First (FCE) Course	22.5	16+	B2	13th Feb 8th May 13th Nov	4 weeks	950
				16th Jan 10th Apr 16th Oct	8 weeks	1900
Cambridge C1 Advanced (CAE) Course	22.5	16+	C1	13th Feb 8th May 13th Nov	4 weeks	950
				16th Jan 10th Apr 16th Oct	8 weeks	1900
IELTS Group Course	22.5	16+	C1	Courses start every Monday	1 week	250
					2 weeks	500
					3 weeks	750
					4 weeks	950
8 weeks	1900					
Exam Preparation One-to-One 30 (IELTS, Cambridge, TOEFL)	22.5	16+	B1- C1	Courses start every Monday	Flexible	650



Cambridge Exam Dates & Prices 2023

CAMBRIDGE EXAM PAPER-BASED EXAMS	EXAM DAY	CLOSING DATE FOR APPLICATIONS*	EXAM FEE	RESULT ISSUE WINDOW
Cambridge A2 Key (KET)	11th Mar 2023 8th Jun 2023 1st Dec 2023	30th Jan 2023 2nd May 2023 23rd Oct 2023	150	25th Apr – 16th May 2023 20th Jul - 9th Aug 2023 22nd Jan – 9th Feb 2024
Cambridge B1 Preliminary (PET)	11th Mar 2023 8th Jun 2023 1st Dec 2023	30th Jan 2023 2nd May 2023 23rd Oct 2023	150	25th Apr – 16th May 2023 20th Jul - 9th Aug 2023 22nd Jan – 9th Feb 2024
Cambridge B2 First (FCE)	10th Mar 2023 3rd Jun 2023 24th Aug 2023 9th Dec 2023	30th Jan 2023 24th Apr 2023 17th Jul 2023 30th Oct 2023	195	25th Apr – 16th May 2023 14th Jul - 3rd Aug 2023 9th - 27th October 2023 16th – 27th Jan 2024
Cambridge C1 Advanced (CAE)	11th Mar 2023 3rd Jun 2023 25th Aug 2022 9th Dec 2022	30th Jan 2023 24th Apr 2023 17th Jul 2023 30th Oct 2023	210	25th Apr – 16th May 2023 14th Jul - 3rd Aug 2023 9th - 27th October 2023 29th Dec - 16th Feb 2024
Cambridge C2 Proficiency (CPE)	4th Mar 2023 9th Jun 2023 2nd Dec 2023	30th Jan 2023 29th May 2023 23rd Oct 2023	210	18th Apr - 9th May 2023 21st Jul - 10th Aug 2023 22nd Jan - 9th Feb 2024

***Late entry Fee = €50 (Applications received and processed 2 week before the exam date = €70)**

- All listed dates are subject to amendments by Cambridge Assessment – kindly confirm dates provided when booking your exam registration
- Even though Late Entries are accepted, inlingua Malta may refuse to accept applicants booking late due to the availability of exam materials.
- The speaking component for each exam may be held on a different date before or after the written papers.

Long Stay Programmes



Long Stay Programmes & Packages

For those students who want to reach optimal levels of English before moving to another English speaking country or following a desired University or College Programme, this course is ideal to develop the fluency in English to that of a native speaker. Throughout this long programme, students are monitored by their trainers and by means of progress tests as they move from one level to the next. Long stay programs often lead to achieving internationally recognized qualifications.

COURSES	HOURS PER WEEK	8 WEEKS+	12 WEEKS+	24 WEEKS+	32 WEEKS+	40 WEEKS+	48 WEEKS +	*ONLINE LEARNING MY.INLINGUA.COM
General English 20	15	1360	1980	3840	4960	6000	6960	180
General English 30	22.5	1600	2340	4560	5920	7200	8400	180

*Continue learning after your stay by including my.inlingua: 3 months activation with course work + 10 online conversation lessons for €180



Available at the following CEFR Levels:

Course & Accommodation Combination Packages

With no set start dates, Course and Residential Combination Packages are the ideal choice for students who are studying for a long period of time and want to diversify the length of their daily lessons and the chosen course of study! These all-inclusive packages offer 1 price for all required services!

8 Weeks



Package Price also includes: General English 20 for 4 weeks, General English 30 for 4 weeks, 2-Way Airport Transfers, First free inlingua Course Book, Welcome Pack and Student Discount Card + FREE SIM Card. Accommodation in a Sliema Shared Self-Catering Apartment (max 3 per room) (€35 High Season Supplement applies for Accommodation).

12 Weeks



Package Price also includes: General English 20 for 6 weeks, General English 30 for 4 weeks, Business English or IELTS Preparation Course for 2 weeks, 2-Way Airport Transfers, First free inlingua Course Book, Welcome Pack and Student Discount Card + FREE SIM Card. Accommodation in a Sliema Shared Self-Catering Apartment (max 3 per room) (€35 High Season Supplement applies on Accommodation).

16 Weeks



Package Price also includes: General English 20 for 8 weeks, General English 30 for 6 weeks, Business English or IELTS Preparation Course for 2 weeks, 2-Way Airport Transfers, First free inlingua Course Book, Welcome Pack and Student Discount Card + FREE SIM Card. Accommodation in a Sliema Shared Self-Catering Apartment (max 3 per room) (€35 High Season Supplement applies on Accommodation).

20 Weeks



Package Price also includes: General English 20 for 10 weeks, General English 30 for 8 weeks, Business English or IELTS Preparation Course for 2 weeks, 2-Way Airport Transfers, First free inlingua Course Book, Welcome Pack and Student Discount Card + FREE SIM Card. Accommodation in a Sliema Shared Self-Catering Apartment (max 3 per room) (€35 High Season Supplement applies on Accommodation).

24 Weeks



Package Price also includes: General English 20 for 12 weeks, General English 30 for 8 weeks, Business English or IELTS Preparation Course for 4 weeks, 2-Way Airport Transfers, First free inlingua Course Book, Welcome Pack and Student Discount Card + FREE SIM Card. Accommodation in a Sliema Shared Self-Catering Apartment (max 3 per room) (€35 High Season Supplement applies on Accommodation).

32 Weeks



Package Price also includes: General English 20 for 16 weeks, General English 30 for 12 weeks, Business English or IELTS Preparation Course for 4 weeks, 2-Way Airport Transfers, First free inlingua Course Book, Welcome Pack and Student Discount Card + FREE SIM Card. Accommodation in a Sliema Shared Self-Catering Apartment (max 3 per room) (€35 High Season Supplement applies on Accommodation).

40 Weeks



Package Price also includes: General English 20 for 20 weeks, General English 30 for 16 weeks, Business English or IELTS Preparation Course for 4 weeks, 2-Way Airport Transfers, First free inlingua Course Book, Welcome Pack and Student Discount Card + FREE SIM Card. Accommodation in a Sliema Shared Self-Catering Apartment (max 3 per room) (€35 High Season Supplement applies on Accommodation).

48 Weeks



Package Price also includes: General English 20 for 20 weeks, General English 30 for 16 weeks, Business English or IELTS Preparation Course for 4 weeks, 2-Way Airport Transfers, First free inlingua Course Book, Welcome Pack and Student Discount Card + FREE SIM Card. Accommodation in a Sliema Shared Self-Catering Apartment (max 3 per room) (€35 High Season Supplement applies on Accommodation).

Accommodation



Accommodation Matters

Staying with a Host Family

inlingua host families are chosen for the welcoming atmosphere in their home. If you choose this type of accommodation, you will learn Maltese customs and traditions, whilst rapidly improving your English through constant communication with your host family. This is a safe and secure options for young students and they can choose to sleep in a single or shared room, on Half or Full Board Basis. There is also the option of booking a single bathroom and the opportunity to be the only person in the family to speak your native language.

PRICE PER PERSON PER NIGHT	BOARD BASIS	STANDARD	HIGH (3rd June - 3rd Sept)
Host Family Single Room	Half Board	40	50
	Full Board	45	53
Host Family Sharing Room	Half Board	28	38
	Full Board	37	45
Supplement	Dietary Request	18	18

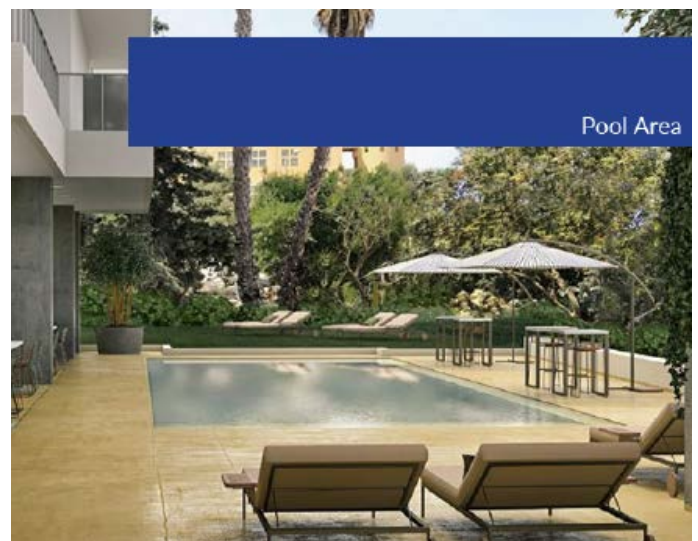
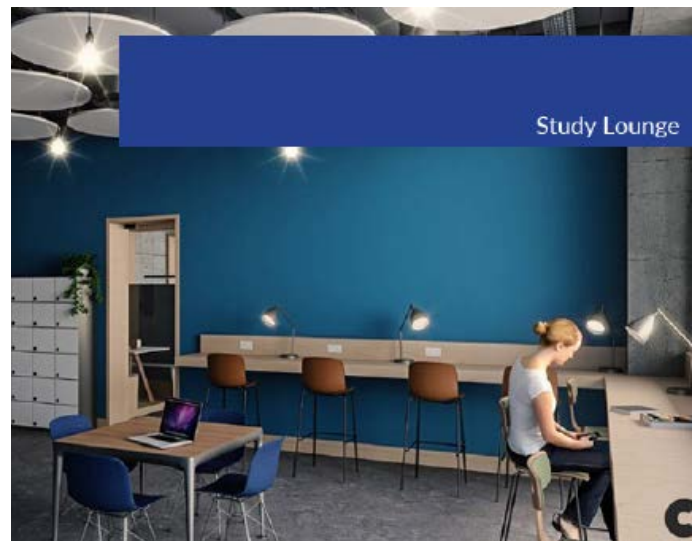
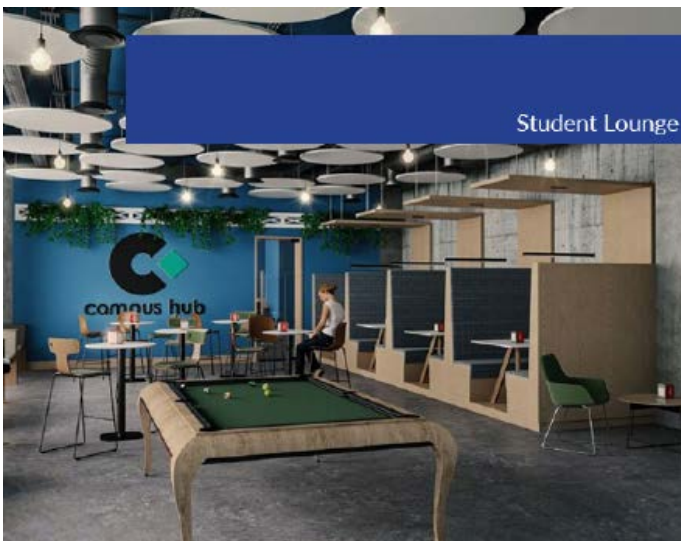


Campus Hub

Redefining Student Life

inlingua Malta has teamed up with Campus Hub Malta to provide students one truly memorable learning experience. True to its promise of quality, the accommodation services offered redefines student living arrangements in order to make sure that their learning experience is not only a memorable one but also a comfortable, safe and an enjoyable experience.

Campus Hub is located in the nearby student town of Msida, and is just a 25 minute bus ride from our school, with major public transport connections in the area, students will find the short distance ideal; whilst walking or biking to school is also made possible by means of safe bike lanes and walking paths. Campus Hub is truly unique to the island and inlingua Malta is glad to be offering the superb quality standard to its students.



Campus Hub offers students a number of other spaces for relaxation including a Student Lounge for the entire facility, a Study Lounge outside of bedrooms, access to the pool and the Campus Hub Piazza. Students will be able to access a number of high street brand names right on site, including a gym, supermarket, juice bar, stationery, clothes shops and numerous restaurants and a 24hr pharmacy.

Campus Amenities and Room Types

Students can opt to choose different Rooming options, to choose between different levels of privacy whether preferring private room options to more communal living spaces and rooms.

Accommodation is in the form of Single Rooms, Twin Rooms in a Room Cluster or Shared Apartments. A Studio Apartment Option is also available

Cluster Apartments use the facilities of a Communal Kitchen and Lounge area. Students can choose a single room, a single room with an ensuite, a Twin Room or a Twin Room with an ensuite in a Cluster Apartment.

Shared Apartments offer their own kitchenette and relaxation area. Students opting for a Shared Apartment can choose a single room or a twin room in a shared apartment.

What's included?

Bed linen and Towel Change Weekly, Fully Functional Kitchen, Lounge Area, Wardrobe and Study Space, Kitchenette, Private Bathrooms (En-suite or shared per 4 people), AC and Climate Control in Room, Check-in and Check-out Facility, 24/7 Reception Service, Laundry Facilities, Water and Electricity, Pool facilities, Student Lounge & Study Lounge & Free WIFI

ROOM TYPE	1 WEEK	8 WEEKS+	12 WEEKS+	16 WEEKS+	24 WEEKS+	32 WEEKS+	40 WEEKS +	48 WEEKS+
Twin Cluster Apartment with Shared Bathroom	154	1232	1680	2240	3360	4480	5600	6720

High Season Supplement (17th June - 31st August) €22.00 per week
Single rooms, Studio apartments & En-suite bathroom options are available on request



Single Room



Twin Room

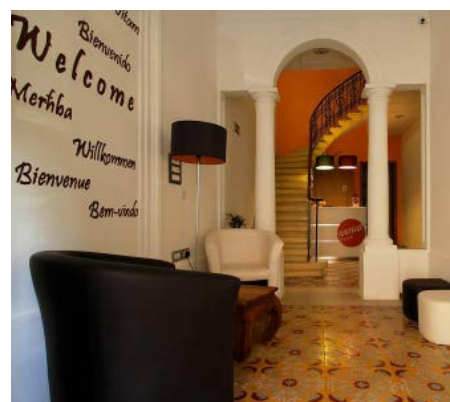


Studio Apartment

Corner Boutique Hostel (Rates Starting from EUR 18 per night)

Corner Boutique Hostel is located in Sliema in one of the location's grand traditional Maltese houses. This charming boutique hostel offers comfortable and affordable living in a non-typical set up. Each bedroom sleeps max 4 people and offers ensuite bathroom facilities. A number of double rooms are also available. A large communal kitchen and living space is located on the lower floor together with manned reception area offering a number of services. The environment is buzzing and it is ideal for the young traveler visiting for 8 weeks or more!

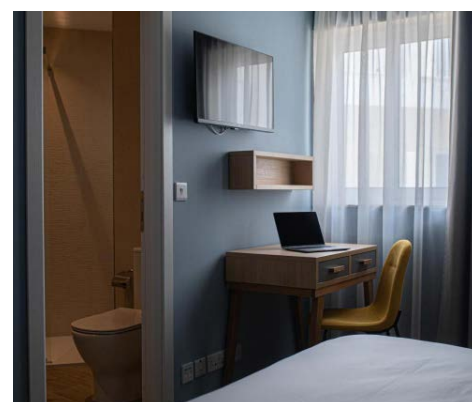
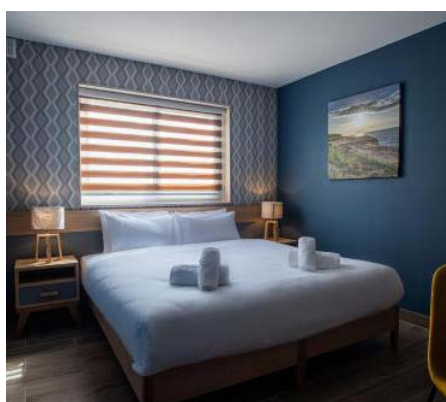
Facilities include: Shared or Single Bedrooms all with ensuite Bathrooms (Bunk-beds or Double Beds available), Check-in/Check-out service, Cleaning daily with a deep clean weekly, Bed Linen and Towels provided and changed weekly, Laundry Facilities available on site, Fully equipped communal kitchen, Free WIFI.



Ta' Tereza (Rates Starting from EUR 50 per night)

This newly refurbished hotel in central Sliema just 10 minutes away from school boasts an excellent standard offering the independence and privacy of a small hotel. A number of rooming options offer modern facilities and furnishings all with an ensuite bathroom together with TV, air-conditioning and heating. Breakfast may also be included in the price options and may be enjoyed on the terrace.

Facilities include: Fully equipped rooms, breakfast, ensuite bathrooms, daily housekeeping, sun terrace, Free WIFI, Reception services, air-conditioning, ironing service



Sliema Self-Catering Shared Apartment

Located in Sliema a few minutes away from the school, the Sliema shared apartment option is perfect for adult students staying 4 weeks or longer and boast all that is required to have a long comfortable stay. Student will enjoy communal living in the form of triple rooms shared living, with shared kitchen and bathroom facilities. All apartments include laundry facilities and fully equipped kitchens and living spaces.

Facilities include:

Self-catering apartment, Bed type – triple, shared bathrooms, check-in service, cleaning twice weekly, bed linen is provide and changed weekly, towels are provided, laundry facilities, fully-equipped kitchen with microwave, iron and ironing board, accessibility to balconies and free WIFI.

ROOM TYPE	1 WEEK	8 WEEKS+	12 WEEKS+	24 WEEKS+	32 WEEKS+	40 WEEKS+	48 WEEKS +
Shared Apartment	125	980	1260	2520	3360	4200	5040

High Season Supplement (3rd June - 3rd September)
 1- 11 weeks - €38.50 per week | 12+ weeks - €24.50 per week



Please note that there are a number of different apartments available with a similar standard to the one depicted here.

Hotel Accommodation

Preluna Hotel (Rates starting from EUR 74 per night)

Set on the Sliema promenade this hotel is located 5 minutes away from the school and features both on-site and off-site facilities. Spread over 12 floors, spacious guest rooms offer great sea views whilst its central location means everything is a few minutes away. Recommended for the Business traveler or families.

Facilities include: Private Beach Club, Fitness and Wellness Spa, Free WIFI, 4 restaurants, 3 Bars, Swimming pool, All air-conditioned rooms, tea/coffee making facilities, satellite TV and Private Bathrooms.



1926 Hotel and Spa (Rates starting from EUR 130 per night)

Situated in the heart of Sliema, this hotel is just a corner away from the school. It is the statement of lean luxury and modernity with its remarkable Beach Club just 200 m away it is ideal to combine learning, with luxury living and relaxation by the water's edge.

Facilities include: Variety of room types including Family Rooms, Private Bathrooms, balconies, tea and coffee making facilities, ironing facilities, Fitness Room, air-conditioning, swimming pool, WIFI and work stations in each room.





ST Bayview, St Blubay and St Azur Hotel (Rates starting from EUR 65 per night)

All properties are located 15 minutes away from school and are situated in the buzzing center of Sliema and Gzira on the promenade, the location is ideal for connecting to all parts of the island. Accommodation consists of aparthotel style rooms as well as regular hotel guest rooms.

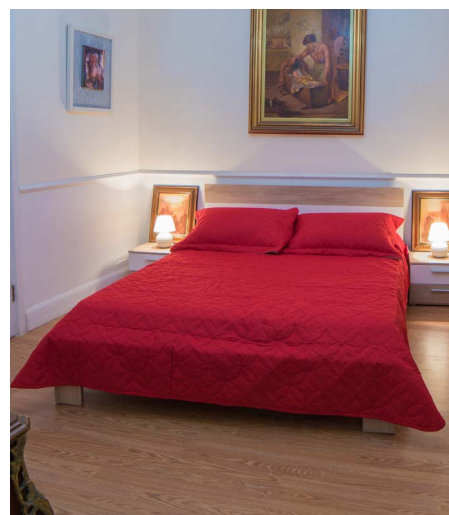
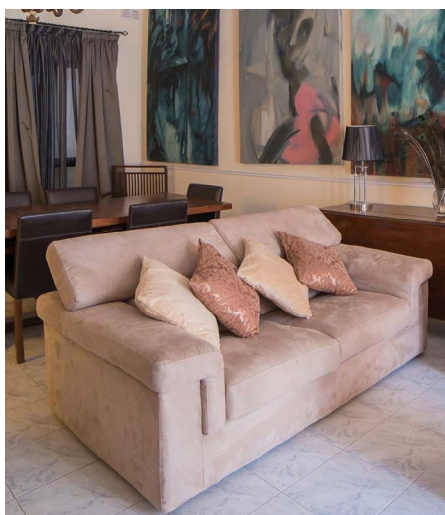
Facilities include: Variety of room options, aparthotel style rooms, seaview or inland rooms, swimming pools and lido, air-conditioning, free WIFI, Breakfast and Full-Board options available.



Family Apartments (Rates Starting from EUR 60 per night)

These apartments are located within the vicinity of the school and are ideal for families who wish to travel together for a number of weeks but would like the independence of living in a self-catering apartment. Fully equipped with all that is required for a comfortable stay, families can opt to choose a one-bedroom or 2 bedroom apartment.

Facilities include: Fully-equipped kitchens, Cleaning and laundry facilities, Self-Check-in, climate control in bedrooms, private bathrooms and living spaces. Free WIFI.



Social Activity Programme

inlingua Malta offers learners the possibility to not just practice English in class, but also whilst having fun. Activities are run exclusively for learners of English travelling to Malta and a weekly programme is set indicating price, meeting point, and duration of activity.

Our exciting programme offers something for families as well as individual adult learners and can be pre-booked before arrival or directly at the school reception.

Learners also benefit from discounts by presenting their inlingua student card at different outlets, a reduced rate at the gym as well as free entrance at the inlingua beach club



Airport Transfers

inlingua Malta offers its students an airport transfer service. Our driver will meet you at the airport to take you to your chosen accommodation in Malta. The transfer service will also pick you up upon departure to take you to the airport.

PRICE PER PERSON	1 PERSON	2 PERSONS	3 PERSONS	4 PERSONS
	45	22.50	20	17

Take Note



Non-Refundable Fees

Registration: €45
Visa Assistance: €45
Student Insurance:
€12.00 per week (Multi-Risk)
€15.00 per week (Multi-Risk & Cancellation)



What's included

Online Placement test www.inlingua-pot.com, Certificate upon completion of course, Welcome Pack, Wi-Fi, Student Discount Card

Opening Hours

Standard Season
Monday - Friday 0830 - 1700
High Season
Monday 0800 - 1730
Tuesday - Friday 0830 - 1730



Information

High Season: 3rd June - 3rd September
Lessons are held in the mornings and afternoons
1 Lesson: 45 minutes
Class Size: Maximum 10
High Season: Maximum 12
Courses Start: Every Monday



Required Course Books

Junior English Book: €40
General English: €30
Business Book + CD: €45
Exam Course Book: €50



Cambridge Exams 2023

FCE Exam Fee: €195
10th March, 3rd June, 24th August, 9th December
CAE Exam Fee: €210
11th March, 3rd June, 25th August, 9th December
CPE Exam Fee: €210
4th March, 9th June, 2nd December

Terms & Conditions

Payment Terms

Upon confirmation of booking and receipt of invoice, payment is to be made in full by Bank Transfer, Credit Card or Secure Online Payment via Flywire as follows:

Up to 6 months prior to arrival date:

Balance to be settled 3 months prior to arrival date.

From 3 months prior to arrival date:

Full payment within seven (7) days of confirmation of booking.

BANK TRANSFER: Payment together with Bank charges on receipt of invoice. Bank details provided on invoice and listed below.

ONLINE PAYMENT: Pay securely through the link listed at the bottom of your invoice www.inlinguamalta.flywire.com. Failure to comply with our payment terms will result in the cancellation of your application.

All fees are to be settled before the enrolment start date and no student will be allowed to start their course until full payment has been received

Cancellation Fees/Refund Policy

You can request a modification, cancellation or refund by contacting us on info@inlinguamalta.com and quoting your reference number.

In the event that you cancel your booking the following refunds will apply:

For cancellations 30 days prior to course or accommodation start date (whichever comes first) inlingua will refund fees received as listed below less non-refundable charges. (Registration fees - Visa assistance, Medical insurance fees if applicable - Administration charges)

30 days prior to arrival date - Full refund (excluding non-refundable charges/*cancellation fees for accommodation)

14 days prior to arrival date - 75% of invoice (excluding non-refundable charges/*cancellation fees for accommodation)

7 days prior to arrival date - 50% of invoice (excluding non-refundable charges/*cancellation fees for accommodation)

3 days prior to arrival date - 25% of invoice (excluding non-refundable charges/*cancellation fees for accommodation)

Cancellation 2 days prior to arrival and "no shows" - no refund

*Hotel Accommodation - cancellation 28 days prior to arrival - no refund

Upon quote, Host Family Accommodation will only be made available for the first 48 hours following a request.

In cases of illness or holidays planned through the duration of the course, the head of school needs to be informed. Lessons missed for this reason will not be replaced or refunded.

Postponements

Course postponements less than 30 days before start of course will be made at a charge of €100.

Accommodation postponement are charged a fee according to the supplier in question.

Visas

Students travelling on a VISA must plan ahead and check with their local Maltese representation with regard to timings for VISA application.

inlingua Malta will issue a Confirmation letter, a ProForma invoice and a Letter of Acceptance for Visa application upon full payment.

There is a charge of €35 for Visa assistance. Any additional cost incurred should documents be sent by courier are to be borne by the student

Cancellations after VISA refusal

Any cancellations due to VISA refusals must be made in writing and communicated to info@inlinguamalta.com within three (3) days of receipt of the refusal document sent by the issuing Embassy/Authority. In the event of a refusal the following cancellation charges apply:-

7 days prior to arrival - 3 days host family/Residence accommodation/ full stay hotel accommodation +*non-refundable charges
Less than 7 days prior to arrival - 1 week tuition + 1 week host family/Residence accommodation/ full stay hotel accommodation + *non-refundable charges*

(*Non-Refundable Charges include registration/Visa Assistance/Courier/Admin fees).

Cancellations or shortening of courses after Visa has been issued No refunds are granted to students failing to arrive or who are absent during their course. Periods of absence are not compensated with free extensions at the end of the course. In the case of students being granted a visa, non-arrivals, late arrivals and periods of absence will be reported to the immigration authorities. For all other reasons, cancellations must be made in writing and the following cancellations charges apply:-

Between 1 - 21 days prior to arrival date - 4 Weeks tuition and accommodation fees, Registration Fee and Admin charges will be retained.

For no-shows, or cancellation or shortening of courses after arrival date - no refund will be given.

Postponement of courses

In the event that, between 14-21 days prior to course start date the entry visa application approval is still pending students can opt to postpone their course to a later starting date within the current year against a fee of €145. On confirmation of Visa approval, cancellation policies above apply.

In case of visa not being granted after full and correct application, students may opt to file an appeal with the appeals court

Local Government Taxes

inlingua Malta will not be held responsible for any additional taxes introduced by the Maltese Government through 2023 and these, if any, must be borne by the student.

Take Your Test Online - Before You Arrive

Adult students are to complete the online placement test at www.inlingua-pot.com before your arrival - failure to do so will mean completing the test on the first day of school resulting in the possible loss of the first 2 lessons. No refund will be offered for these missed lessons. Junior students (5 - 12 year olds) will be sent a digital test but may also be tested on their first day of school, or placed according to age group

Courses/Books/Reduced Lessons

Under no circumstance are course fees transferable to a 3rd party. Credit towards courses must be utilised within the same year.

Where only 1 or 2 apply for an exam preparation course, inlingua will apply a reduced hour procedure in which 30 lessons will be reduced to 20 lessons.

Attendance

In order to receive a certificate of attendance students must attend a minimum of 80% of lessons scheduled. Students whose attendance falls below this level may be asked to leave the programme. Students travelling on a visa who fall below the required attendance level will be reported to the immigration authorities.

Double Banking

inlingua Malta reserves the right to adapt a double-banking system whereby students may have a varied time-table in which lessons are delivered either in the morning or in the afternoon.

Child Supervision/Travelling

Unaccompanied Minors

Students booking Junior Courses travelling with accompanying adults are supervised during school hours.

Unaccompanied minors aged between 13-14 years travelling on their own must contact their airline for clarification and pay stipulated unaccompanied minor's fees (if applicable) when booking their flight tickets.

Minors who have not filled in an unaccompanied minor form and paid relevant charges will NOT be allowed to travel. Proof of payment must be provided on confirmation of booking.

An airport supervision charge of €40 per way must be added for unaccompanied minors wherein an inlingua representative will meet on arrival/check-in the minor student and wait with the student prior to handing over to an airline representative prior to the departure flight. This policy is being imposed by various airlines and clarification prior to travelling is ESSENTIAL.

Eco Contribution Tax

All local and foreign guests at the age of 18 years or older, staying at any type of accommodation, are required to pay an Environment Contribution. The rate is that of €0.50 per night up to a maximum of €5 (10 nights +); for each continuous stay in the Maltese Islands including Gozo. This contribution applies for hotels, guesthouses, hostels, self-catering apartments, B&Bs and host families.

Parent/Guardian Consent Form - Students under 18

It is imperative that the Parent/Guardian Consent Form sent by our Sales Department on application of booking is duly filled and signed by Parent/Guardian. inlingua Malta cannot take responsibility regarding the well-being of students under 18 travelling unaccompanied without the relevant form in hand.

Customer Care & Student Assistance

The inlingua Malta team is freely available to assist students and deal with all circumstances during their stay. Feedback forms are available at reception. If at any time a student is unhappy with any aspect of their course, accommodation or leisure activities they may opt to bring this to our attention either verbally or in writing. inlingua Malta will not accept any complaints after a student's stay in Malta has ended; unless communicated as detailed above.

Code of Conduct

Dismissal Policy: inlingua Malta expects that all students are well-motivated, polite and considerate towards members of staff, host-families and fellow students at all times. inlingua reserves the right to exclude/expel a student from a programme/course in the event of misconduct within the school/place of accommodation/elsewhere. Stipulated curfew imposed on students living within a host family must be adhered to. Failure to abide by local laws and regulations could also result in expulsion. In the case of expulsion no refunds will be given. Should a student be sent back home extra travelling costs are borne by the student.

Host Families Arrivals /Departures

Students lodged at Host Family should arrive at the Host Family between 11:00 and 23:00 and depart before 15:00. Students staying at a host family should make sure that their luggage and personal belongings are packed and their room is vacated if their departure time is after 15:00. Should students want to benefit from facilities or meal plans outside the suggested arrivals and departures times this should be agreed upon on confirmation of flight details and extra nights will be charged accordingly.

Host Family Curfew Times

Students staying with a Host Family are asked to respect curfew times. Students between the ages of 13 and 15 are to be home at 22:00. Student between 16 and 17 should be home before 00:00.

Transfers

In order for inlingua to provide an efficient airport transfer service, all flight details must be received in full (i.e. Flight number, Arrival and Departure time, Airline and point of origin) no later than 7 days prior to arrival. If not provided 7 days prior to arrival, students will not be entitled to a refund in the case of missed transfers. Airport transfer fees include a maximum of 1 hour waiting time. In the event of a flight delay exceeding 1 hour, students will be charged an additional €15 per hour pro rata on their first day at school.

Photography, Filming & Sound Recording

During the course of a student's stay, the School may arrange to record, photograph or shoot video footage for its promotional purposes only, both printed and online. Any student who does not wish to participate should express this and indicate at the time of recording, photographing or video shooting the wish not to participate.

Public Holidays

1st January, 10th February, 19th March, 31st March, 7th April, 9th April, 1st May, 7th June, 29th June, 15th August, 8th September, 21st September, 8th December, 13th December, 25th December - Some and not all of the lessons that fall on public holidays during week days will be made up during the rest of the week.

Insurance/Liability

Students must have adequate health, accident and travel insurance while attending any of our programmes. It is recommended that all personal belongings such as cameras, iPod, iPads, laptops and other valuables are insured prior to arrival. This should be obtained from your country of residence. inlingua Malta will not be held liable for loss, damage or injury to persons or property. Student insurance, compulsory for students below the age of 18, can be purchased from inlingua Malta prior to arrival. We recommend that students prepare a photocopy of their passport or ID card prior to their arrival in Malta.

Leisure Programme

inlingua Malta reserves the right to make changes to the leisure programme due to weather conditions or any other reasons beyond our control. No refunds nor changes can be made on pre-paid activities included in our programmes.

Long stay Packages

Students booking courses of a duration of 8 weeks or more are not entitled to a refund or course credit in case of them cancelling their course, accommodation or any other ancillary service booked during their stay. Long-stay students who are NOT travelling on a VISA may opt to take a total of 1 week holiday per 8 week course stay which may be extended to accommodate the full course weeks. Any additional holiday weeks added are automatically lost and are not refundable. In order to avail of this service, the student must first inform the sales or academic department. In such cases, inlingua does not guarantee continuity in course syllabus.

Force Majeure

inlingua Malta will not be responsible for any failure to comply with any of its obligations (and therefore shall not be required to provide any compensation) if the failure is occasioned by any cause beyond inlingua's reasonable control; nor shall inlingua be held responsible for any costs incurred by or on behalf of the student as a result of any such cause. Such causes shall include but shall not be limited to war, threat of war, riot, civil strife, industrial dispute, terrorist activity, natural or nuclear disaster and unusually adverse weather conditions.

PAYMENT DETAILS

Kudos Ltd

Branch: HSBC p.l.c. High Street, Sliema
SLM 1549, Malta

IBAN No: MT08 MMEB 4406 0000 0000 0625 6218 001

Account Number: 006 256218 001

Swift Code: MMEBMTMT

Sort Code: 44060

CONTACT DETAILS

inlingua School of Languages

Address: 92, Tigne Towers, Tigne Street, Sliema, Malta

VAT Registration No: MT 2573-0022

Website: www.inlinguamalta.com

E-mail: info@inlinguamalta.com

Tel: +356 2010 2000



inlingua Malta
92, Tigne Towers
Tigne Street
Sliema SLM 3172
Malta

T +356 2010 2000
info@inlinguamalta.com
www.inlinguamalta.com

