



The English  
Language Centre

BRIGHTON / CHESTER / EASTBOURNE



# English Courses

Brighton / Chester / Eastbourne

*Helping you to build your future*



Eastbourne beach



Student lounge at ELC Brighton



Students in Chester

# Welcome to ELC

The English Language Centre is a not-for-profit organisation. Our courses and teaching provide effective training for students who need English for work, study, travel or personal pleasure.

We understand that everyone is unique with different needs and different goals. We will provide you with individual attention to help you achieve your goals.

We look forward to welcoming you to ELC at our schools in Brighton, Chester and Eastbourne.

# Our Mission

**To transform lives by enabling people to better communicate globally through:**

- teaching of the English language
- promoting inter-cultural understanding
- encouraging appreciation of the different ways we all live, think and learn

# Our Values

**Excellence:** we aim to offer the highest standards in teaching, training, services and facilities

**Integrity:** we aim to be honest, fair and ethical in all our relationships

**Innovation:** we believe in constantly reviewing and developing our teaching, facilities, services and staff

**Respect:** we endeavour to treat everyone equally and with respect, understanding that everyone is unique with different needs and different goals

**Collaboration:** we recognise the importance of working and studying together, as a team



Garden at ELC Eastbourne



ELC Brighton Computer Room



Student at ELC Chester



Reception staff at ELC Brighton

## Why choose ELC?

- ♥ N°1 group of language schools in UK \*
- ♥ 3 schools in beautiful locations, all with easy access to London and international airports
- ♥ our experience – since 1936 in Eastbourne, 1976 in Chester and 1962 in Brighton
- ♥ friendly, caring and safe learning environments
- ♥ wide variety of English language courses for adults, young adults and teens
- ♥ experienced and professional teachers
- ♥ good nationality mixes
- ♥ quality accommodation close to school (max 40 minutes)
- ♥ flexibility, personal care and continuous support
- ♥ good facilities with modern technology
- ♥ full social programme of afternoon/evening activities and weekend excursions

\* based on EL Gazette's review of British Council publishable statements.





Royal Pavilion, Brighton

# Brighton

Brighton is a vibrant, cosmopolitan city – a city of education and entertainment. Often called ‘London-by-Sea’, it has some of the best shopping, restaurants, pubs and night clubs on the south coast of England.

**Population: 275,000**

**London: 50-60 minutes**

**Gatwick airport: 35 minutes**

**Heathrow airport: 75-90 minutes**



i360 in Brighton



Brighton seafront



Brighton Lanes

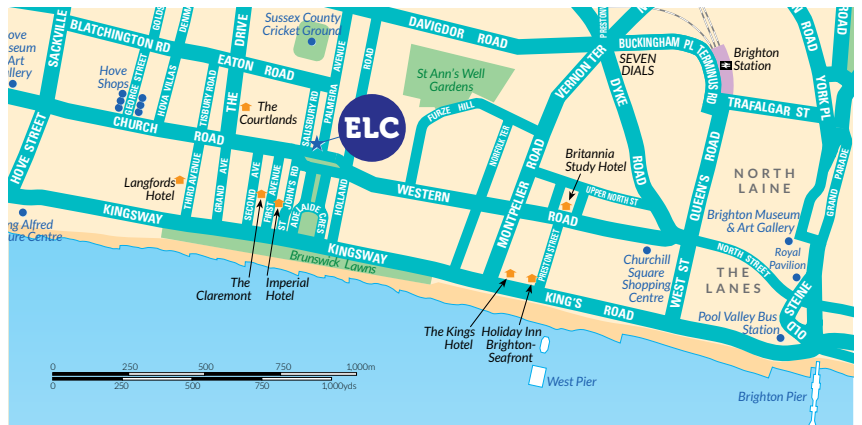


Brighton Palace Pier



# ELC Brighton

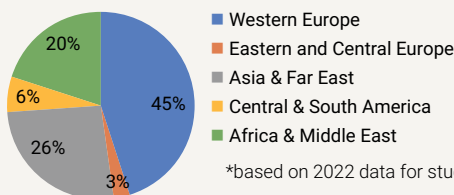
Located in beautiful Palmeira Square, 5 minutes' walk from the beach and 10-15 minutes' walk to the city centre, ELC Brighton is a large, spacious school combining modern facilities with a unique historic interior.



## Fact File

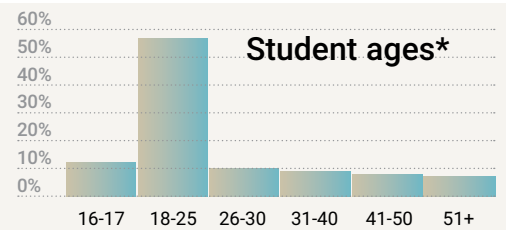
- interactive whiteboards, iPads, smart TVs
- free Wi-Fi
- 2 student lounges with flat-screen TVs
- student 'kitchen' with microwaves, kettles + drinks machines
- Study Centre and Computer Room
- bookshop
- Business Centre with business lounge + computer room
- large Lecture Hall
- patio

## Nationality mix\*



\*based on 2022 data for students on brochure courses

## Student ages\*



Founded	Capacity	Classrooms	Computers	GE Maximum class size	Minimum age
1962	320	32	17	12	16



Bridge Street, Chester

# Chester

Chester is a unique English city, offering the perfect combination of tradition and modern culture. It is a safe, welcoming city with excellent shopping, a vibrant nightlife and many independent shops/cafes.

**Population: 120,000**

**Liverpool: 45 minutes**

**London: 125 minutes**

**Manchester/Liverpool airports: 40 minutes**



Students at the Cross, Chester



Eastgate Clock in Chester



Old Dee Bridge, Chester



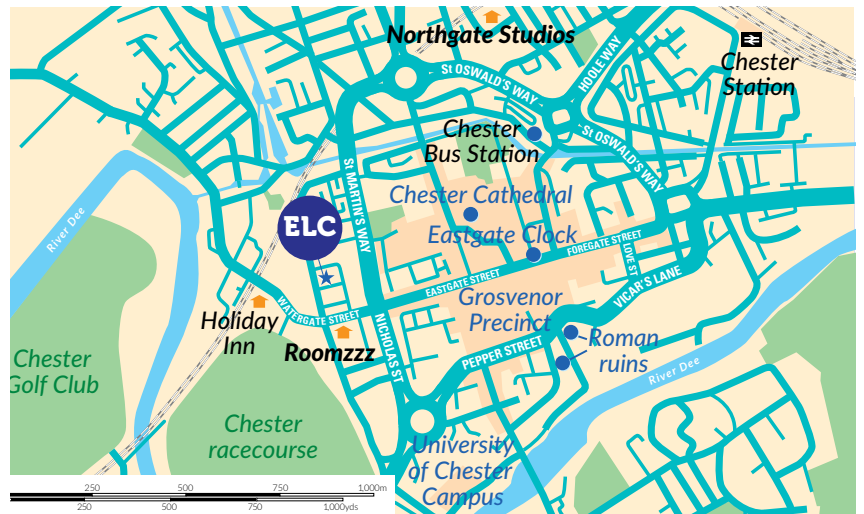
Watergate Street, Chester



ELC Chester main school buildings

# ELC Chester

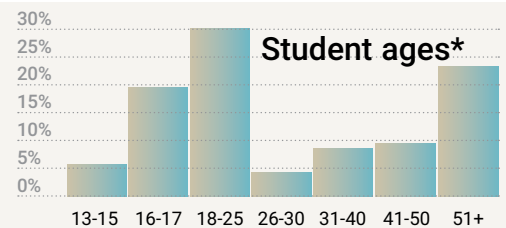
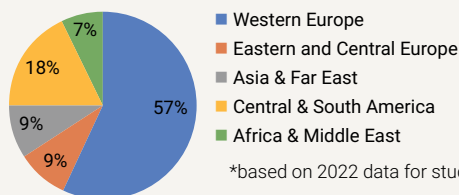
Located in the old walled city and a 5-minute walk to the city centre, ELC Chester is a medium-sized school with a full range of courses to suit different age groups and students with different needs.



## Fact File

- 3 buildings in an historic square
- separate building for 25+ course students
- 2 large student lounges
- coffee facilities and microwaves
- excellent resources for learning
- self-access centre
- patio garden
- free Internet and WiFi access
- over 50 nationalities every year

## Nationality mix\*



\*based on 2022 data for students on brochure courses

Founded	Capacity	Classrooms	Computers	GE Maximum class size	Minimum age
1976	180	20	12	12	13



View of Eastbourne from Beachy Head Road

# Eastbourne

Eastbourne is a quiet, safe town – a traditional seaside town famous for its beautiful setting between the green hills of the South Downs, the white cliffs of Seven Sisters and the sea.

**Population: 100,000**

**London: 90 minutes**

**Gatwick airport: 60 minutes**

**Heathrow airport: 120 minutes**



Eastbourne Pier



Eastbourne Promenade



Seven Sisters Country Park





# ELC Eastbourne

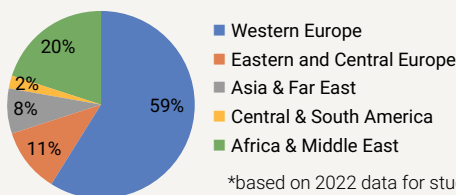
Located in the centre of town, only 5-10 minutes' walk from the beach, the station and the main shopping centre, ELC Eastbourne is a medium-sized school with modern facilities and a beautiful garden.



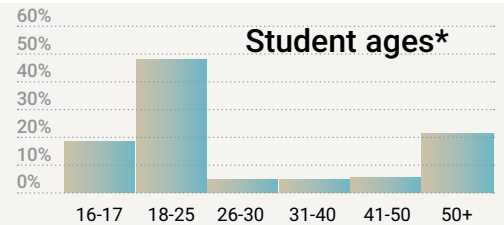
## Fact File

- interactive whiteboards, iPads, smart TVs
- free Wi-Fi
- large student lounge with piano, video games and table-tennis
- student 'kitchen' with microwaves, kettles + drinks machines
- games room with pool table and PCs
- Study Centre and Computer Room
- bookshop
- spacious garden

## Nationality mix\*



## Student ages\*



\*based on 2022 data for students on brochure courses

Founded	Capacity	Classrooms	Computers	GE Maximum class size	Minimum age
1936	248	22	18	12	16



Teacher in Eastbourne

# Our Teaching

Our aim is to help you achieve your language learning goals and communicate in real life situations.

**It is a partnership between you and us. We offer:**

- small, mixed nationality classes
- serious study with motivating, fun lessons
- learner-centred classes with personal attention
- regular progress tests and tutorials every 4 weeks
- qualified teachers, a high ratio with many years' experience and diploma or masters qualifications



Teacher in Brighton



Teacher in Chester



Teacher in Eastbourne



Teacher at ELC Brighton

## Our Levels

### ELC Levels

### IELTS

### Cambridge

ELC Levels		IELTS	Cambridge
C2 Upper-advanced	You can use English very well in demanding situations Your performance level may be above an average native speaker	8 – 9	CPE
C1 Advanced	You can use and understand complex language You can use English well in all but the most demanding situations	7 – 8	CAE
B2 Upper-intermediate	You can use English effectively in all familiar situations You can use more complex English and cope with more demanding situations	5 – 6.5	FCE
B1 Intermediate	You can use English to express simple ideas and achieve results You can use a range of basic language well in most situations	4 – 5	PET
A2 Pre-intermediate	You can use English in most familiar situations You can use English in a limited way in more difficult situations	3	KET
A1/A2 Elementary	You can use your English at a 'survival' level You can use English only in very familiar situations		
A1 Beginner	You can understand and use very basic vocabulary and grammar You can ask and answer very simple questions about yourself		

On average it takes about 12 weeks to complete one level. Your progress will depend on many factors including your motivation, attendance and how much you use English outside class.



Afternoon class in Eastbourne

## General English courses

Our General English courses are designed to give you the confidence to communicate effectively in real-life situations.

### General English

The course provides a balanced programme focusing on the skills of speaking, listening, reading and writing whilst covering essential grammar, vocabulary, pronunciation, idioms and colloquial language.

The course provides effective training for students who need English for work, study, travel or personal pleasure.

#### **In addition to a core morning programme of 20 lessons study, we offer the possibility:**

- to focus more specifically on your goals with 1 or 2 electives per afternoon
- to combine English language study with developing a practical skill
- to focus specifically on your language needs with one-to-one lessons



Study Centre at ELC Brighton

#### **Course Facts**

**Hours (BTN/EBN):** 25 or 30 lessons/week (18.75 or 22.5 hours)

**Hours (CTR):** 28 lessons/week (21 hours)

**Start:** Any Monday

**Class size:** Maximum 12 students (average 10)

**Level (BTN):** Beginner to Advanced

**Level (CTR/EBN):** Elementary to Advanced

**Age:** Minimum 16 (average 23)



Classroom in Chester

## General English afternoons

**Our afternoon lessons help you to further develop your English and/or focus on more specific needs and goals.**

### Speaking, pronunciation and listening<sup>^</sup>

Develop your real-life conversation skills and fluency. Improve your pronunciation so that people will understand you better.

### Academic English IELTS/EAP<sup>\*\*</sup>

Preparation for the academic IELTS exam and for university study. Study all 4 IELTS papers, practise listening for lectures and giving presentations.

### Cambridge exam preparation<sup>\*</sup>

Training in exam techniques. Study reading, writing, speaking, listening and grammar in use for Cambridge First (FCE) and/or Advanced (CAE).

**Or, at extra cost, you could choose one-to-one lessons for intensive personalised study.**

### General English + One-to-One

Your teacher will design the afternoon 1:1 course just for you. For example, study business English for your job, prepare for an important exam, practise conversation.

### Reading, writing and vocabulary<sup>^</sup>

Build your vocabulary and learn techniques to remember and use more words and phrases correctly. Practise vocabulary in context.

### English for Work<sup>\*</sup>

Introduction to English used in work situations. Focus on making phone calls, language for presentations, meetings and negotiations.

### TOEIC preparation<sup>\*</sup>

Complete and thorough preparation for the listening and reading exam. Practise exam questions and learn exam techniques.

Options are subject to availability at each centre. <sup>^</sup>Combined in Chester <sup>\*</sup>Intermediate to advanced <sup>\*\*</sup>Pre-intermediate to advanced



English Plus Golf putting practice in Eastbourne

## General English Plus options (Eastbourne)

The General English Plus options allow you to combine morning lessons on the General English course with afternoons practising and developing a practical skill.

### Yoga/Natural Health

Choose from a wide range of natural fitness classes like Pilates, yoga, Tai Chi, shiatsu and therapies like aromatherapy and massage.

### Horse-riding

For all levels from complete beginner to British Horse Society (BHS) qualifications.

### Watersports

Learn and practise watersports like kayaking, sailing, windsurfing, paddle-boarding and body boarding.

### Golf

Lessons with a professional coach at Eastbourne Golf Park.

### Tennis

Lessons with a professional tennis coach who will help you to improve all aspects of your game.



English Plus Yoga in Eastbourne

### Course Facts

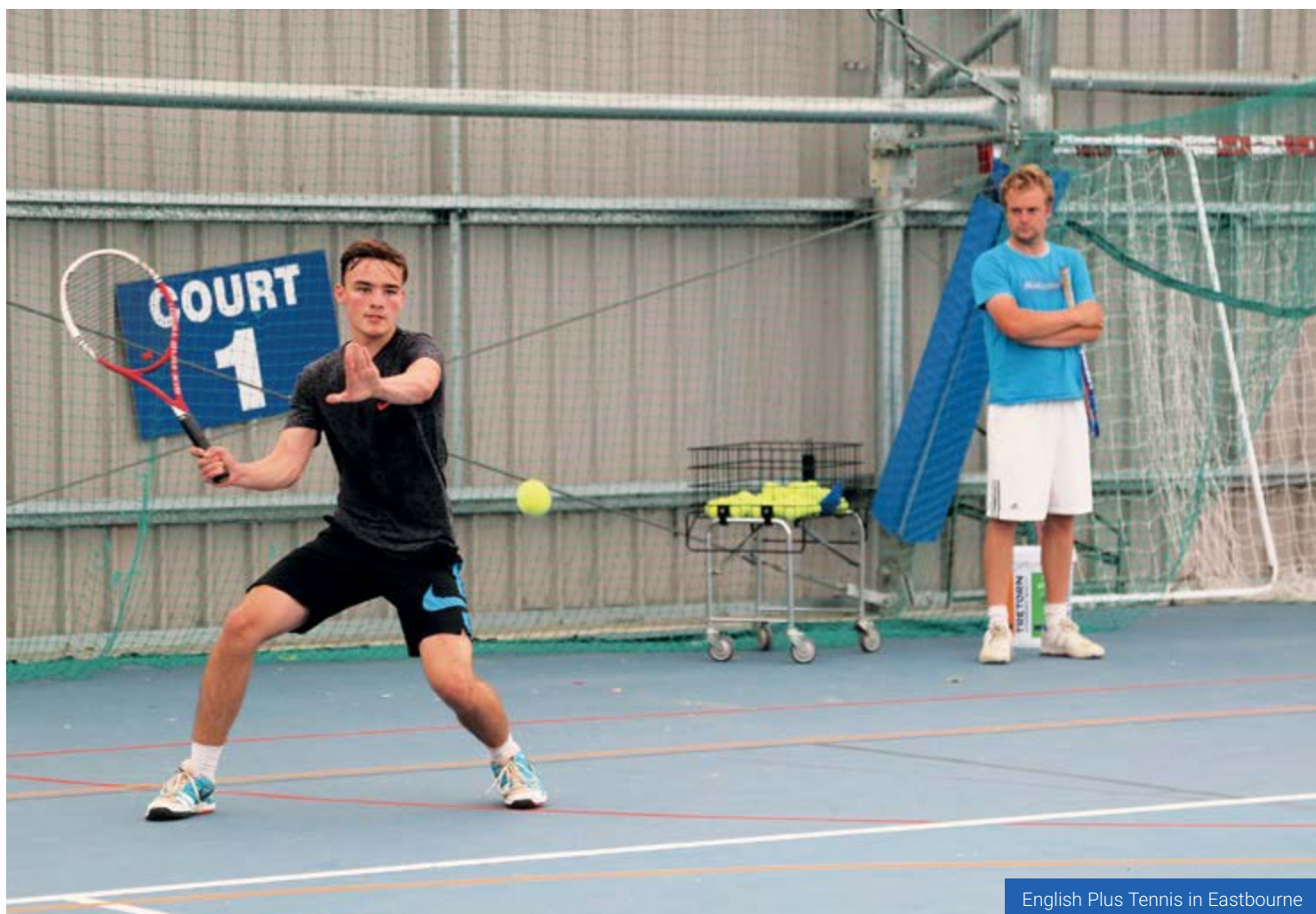
**Hours (EBN):** 20 lessons (15 hours) + 3 afternoons of Plus per week

**Start:** Any Monday

**Class size:** Maximum 12 students (average 10)

**Level:** Beginner to Advanced

**Age:** Minimum 16



English Plus Tennis in Eastbourne

## General English course timetables

Brighton / Eastbourne	Monday	Tuesday	Wednesday	Thursday	Friday
GE25, GE30 and GE Plus mornings	9.00 – 10.30 Core GE lessons	9.00 – 10.30 Core GE lessons	9.00 – 10.30 Core GE lessons	9.00 – 10.30 Core GE lessons	9.00 – 10.30 Core GE lessons
	11.00 – 12.30 Core GE lessons	11.00 – 12.30 Core GE lessons	11.00 – 12.30 Core GE lessons	11.00 – 12.30 Core GE lessons	11.00 – 12.30 Core GE lessons
GE25 programme	13.30 – 14.30 Option	13.30 – 14.25 Option	13.30 – 14.25 Option	13.30 – 14.25 Option	Free time or supervised self-study
GE30 programme	14.35 – 15.30 Option	14.30 – 15.30 Option	14.35 – 15.30 Option	14.35 – 15.30 Option	
Free time or supervised self-study until school closes					

General English Plus afternoon class times and days may vary.

Chester	Monday	Tuesday	Wednesday	Thursday	Friday
GE28 mornings	9.30 – 11.00 Core GE lessons	9.30 – 11.00 Core GE lessons	9.30 – 11.00 Core GE lessons	9.30 – 11.00 Core GE lessons	9.30 – 11.00 Core GE lessons
	11.30 – 13.00 Core GE lessons	11.30 – 13.00 Core GE lessons	11.30 – 13.00 Core GE lessons	11.30 – 13.00 Core GE lessons	11.30 – 13.00 Core GE lessons
GE28 afternoons	14.15 – 15.45 Option	14.15 – 15.45 Option	14.15 – 15.45 Option	14.15 – 15.45 Option	Free time or supervised self-study
Free time or supervised self-study until school closes					



Class in Chester

## Examination courses

ELC provides a wide range of courses and examinations to help you achieve the English language qualifications you need for your future – for business, for academic study and for travel/life.

### We can help you prepare for:

- Cambridge English exams (CPE, CAE, FCE, PET, KET)
- Cambridge Business English exams (BEC)

#### Course Facts

**Hours (BTN/EBN):** 25 or 30 lessons/week (18.75 or 22.5 hours)

**Hours (CTR):** 30 lessons/week (22.5 hours)

**Start:** Fixed dates

**Class size:** Maximum 12 students (average 10)

**Level:** Intermediate to Advanced

**Age:** Minimum 16 (average 22)



Class in Brighton



Class in Eastbourne





Class in Brighton

**Our intensive exam preparation courses provide complete and careful preparation for all aspects of the relevant exam.**

### Cambridge Examination courses

Separate, intensive courses - Cambridge B2 First (FCE), C1 Advanced (CAE) and C2 Proficiency (CPE).

### IELTS Preparation course

Complete and careful preparation for all aspects of the academic IELTS module.

	Cambridge	IELTS	TOEFL iBT	TOEIC	Trinity GESE	Cambridge BEC
C2 Upper-advanced	CPE	8 – 9			12	
C1 Advanced	CAE	7 – 8	110 – 120	945	10 – 11	BEC Higher
B2 Upper-intermediate	FCE	5 – 6.5	87 – 109	785	7 – 9	BEC Vantage
B1 Intermediate	PET	4 – 5	57 – 86	550	5 – 6	BEC Preliminary
A2 Pre-intermediate	KET	3		225	3 – 4	
A1/A2 Elementary				120	1 – 2	
A1 Beginner						

Table provides an approx guide of which exams can be taken at each level. Exam courses subject to availability at each centre.



# Long-term study

## Study Year Programme

The Study Year Programme is our most flexible and economic option for studying for 6 months or more.

**It is a comprehensive language programme designed to help you prepare for your future.**

**You can:**

- develop overall confidence and fluency in English
- communicate effectively in English
- gain internationally recognised qualifications
- develop English for social, academic and work environments
- experience UK life and culture
- make friends with people from all over the world

### Key features

- wide variety of General English, afternoon options and intensive exam courses
- choose the courses that best meet your needs
- 1 free exam included from IELTS, FCE, CAE, CPE
- 1 free airport transfer on arrival (Gatwick or Heathrow), (Liverpool or Manchester for Chester)
- study before, during and after your stay with ELC online
- regular progress tests and tutorials every 4 weeks

### Course Facts

**Hours (BTN/EBN):** 25 or 30 lessons/week (18.75 or 22.5 hours)  
**Hours (CTR):** 28 lessons/week (21 hours)  
**Start:** Any Monday  
**Class size:** Maximum 12 students (average 10)  
**Level (BTN):** Beginner to Advanced  
**Level (CTR/EBN):** Elementary to Advanced  
**Age:** Minimum 16 (average 23)



Lorenzo Natale, SYP student with classmates in Eastbourne

## Life-changing experiences

### Lorenzo, 25, Italy, 24 weeks SYP In Eastbourne

Lorenzo came to ELC after finishing a Master's degree in Business. English is important to him as a way to connect and communicate with others. His experience at ELC has encouraged him to look for work on the international stage and he hopes to start his career in Event Management.

**Start level:** B2  
**Finish level:** C1  
**Programme:** General English, Cambridge First (FCE)  
**Free exam:** Cambridge FCE (grade A)

“The teachers and staff members are amazing. I feel very at home here... I think I've grown up as a better person... learnt to interact with people more, be more social and less afraid to make friends and go out and meet people.”



Lorenzo at ELC Eastbourne

### Emeline, 17, Belgium, 24 weeks SYP in Chester

Emeline's goal is to be a sociologist. She came to Chester to prepare for IELTS, achieving 7.5 overall. She has now been accepted by her university of choice in Japan. After this experience Emeline feels that being able to speak English at a high level has opened new doors in her life.

**Start level:** B1  
**Finish level:** C1  
**Programme:** General English, IELTS  
**Free exam:** IELTS

“I chose Chester because of its high quality reputation. My teachers identified my needs and helped me improve both my weaknesses and strengths. Studying in Chester is an ideal opportunity to learn English and have a great time.”



Emeline at ELC Chester



## 25+ Courses (Chester)

### 25+ Group Course

Short, intensive English language programmes for people who want to:

- study in small classes with other adults
- develop their English skills in a general and/or work-related context

Our trainers will design your course programme to reflect your needs based on a questionnaire you will complete before the course starts.

Small classes, a course tailored to your needs and a dedicated training centre help ensure that learning is highly effective and personalised.

The 25+ course provides:

- a focus on spoken English
- lessons designed to develop your confidence in using English in social and professional settings
- an adult environment in a separate building dedicated to our mature students aged 25+
- social events and excursion opportunities to make the most of your short stay in Chester

#### Course Facts

**Course length:** 1 to 6 weeks  
**Hours:** 30 lessons/week (22.5 hours)  
**Start:** Any Monday  
**Class size:** Maximum 6 students (average 3)  
**Level:** Elementary to Advanced  
**Age:** Minimum 25 (average 43)



25+ class in Chester

## 25+ Combination courses

Flexible combination of 25+ group and individual lessons:

- 30 x 25+ group + 5 x 1:1 lessons
- 20 x 25+ group + 10/15 x 1:1 lessons

Ideal for clients with two basic requirements:

- to develop all-round fluency in English
- to have specific 1:1 language training to meet personal or professional needs

The one-to-one lessons can focus on:

- General English
- work-related English
- English for Specific Purposes (ESP)

**We can provide specialised training in areas such as:**

- tourism management
- customer services
- marketing
- teacher training (including CLIL and methodology)
- human resources
- finance
- journalism



25+ social event in Chester



One-to-One class in Chester



Executive Mini Group class at ELC Brighton

## English for Business (Brighton)

All our business courses are designed for experienced professionals who need to communicate effectively in English. Our courses are tailored to your specific needs and develop the skills you need for use in your business contexts. All of the courses are taught by trainers experienced in teaching professionals.

### Typical skills you may focus on:

- conducting and contributing to meetings and interviews
- giving presentations
- negotiating
- developing specialised business vocabulary
- discussing key business concepts
- developing cross-cultural awareness
- communicating effectively on the telephone
- writing effectively in business (emails, letters and reports)
- socialising

### We can provide specialised training in areas such as:

- management
- marketing and sales
- secretarial English
- military English
- banking and finance
- computing
- travel and tourism
- law
- medicine/pharmacy
- aviation English
- engineering/technical subjects



Executive Mini Group class at ELC Brighton



Executive Mini Group class in Brighton

### English for Engineers

Designed for experienced engineers and other technical staff who need to use English to communicate with colleagues or clients.

### General + Business English for Professionals

For experienced business people who would like to improve their all-round level of English and also include a significant element of business English in small groups.

### English for PAs and Secretaries

Designed for personal assistants and secretaries who need to use English at work.

### Combined One-to-One + Executive English

One-to-One lessons in the mornings with small business groups in the afternoons.

### One-to-One Business English for Professionals

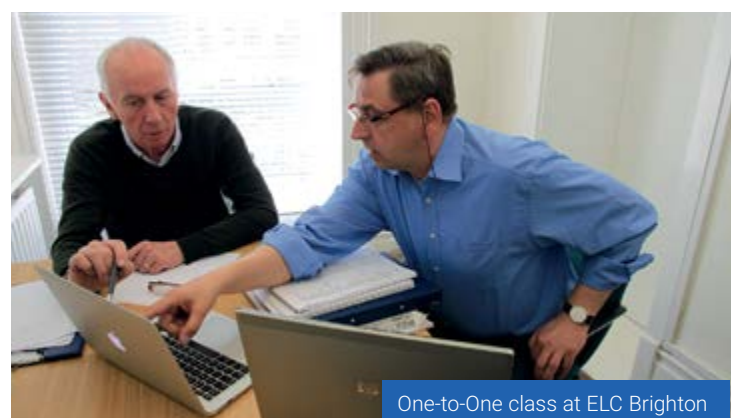
Intensive One-to-One study focussed specifically on your personal needs.

### Business English Mini Groups

Designed for the highly motivated business person who wants to focus intensively on the language of business in small groups.

### Business English Mini Groups + One-to-One

This option allows individual Executive Mini-Group participants to specifically focus on their own needs in one-to-one lessons after the main course.



One-to-One class at ELC Brighton



Teaching English with Technology in Brighton

## Courses for Teachers (Brighton)

Our teachers' courses aim to meet your professional needs and are ideal for overseas teachers of English.

**These very practical courses are designed to:**

- keep you up-to-date with developments in language teaching
- expand your range of teaching techniques
- encourage you to reflect on your personal teaching context
- develop your fluency and knowledge of English
- experience different aspects of life and culture in the United Kingdom
- allow you to share ideas and experience with colleagues from other countries

In addition, you will refresh and extend your understanding and knowledge of English language and culture.



Primary teachers in Brighton

### Course Facts

**Hours:** 30 lessons/week (22.5 hours)

**Start:** Fixed dates

**Class size:** Maximum 12 students (average 10)

**Level:** Pre-intermediate to Advanced

**Age:** Minimum 21 (average 41)





Language, Methodology and Culture course in Brighton

### English in the Primary Classroom

Designed to help primary specialists teach English in the primary classroom, gain confidence and fluency in speaking English in the classroom and devise materials.

### Language Methodology and Culture

Aims to develop your English language skills, to provide you with a refreshing and practical look at current language teaching ideas and to explore modern British life and culture.

All our teachers' courses are tailormade to the needs of the course participants based on a pre-course questionnaire that you complete before the start of the course.

**The courses can include the following:**

- CLIL
- teaching english with technology

### Teaching Business English

For all teachers of business English. Helps you develop a comprehensive understanding of the business world and extend your range of techniques for teaching business English.



50+ lesson in Chester

## 50+ Courses (Chester and Eastbourne)

### Language holidays for the over 50s

The 50+ course is designed for mature people who wish to combine practising their English with an extensive programme of visits, activities and excursions.

Eastbourne and Chester offer two very different but uniquely English destinations.

#### Our 50+ courses aim to:

- build your confidence in speaking English
- help you improve your understanding of spoken English
- show you beautiful areas of Britain
- introduce you to different aspects of life and culture in the United Kingdom
- guide you around historic towns, villages, castles, parks and gardens
- allow you to meet new people and make new friends

In addition to morning lessons in mixed nationality classes with other 50+ students at your level, you will have 3 half-day events per week and full-day guided excursions at the weekend.



50+ lesson in Eastbourne

#### Course Facts

**Hours:** 20 lessons/week (15 hours) + social programme

**Start:** Fixed dates

**Class size:** Maximum 12 students (average 10)

**Level:** Elementary to Advanced

**Age:** Minimum 50 (average 61)



Eastbourne 50+ students in the gardens at Michelham Priory

## A typical 50+ social programme

### Chester

#### Mornings 9.30 – 11.00, 11.30 – 13.00

#### Afternoons

Monday	Welcome & test	Lessons	Introductory tour of historic Chester
Tuesday	Lessons	Lessons	
Wednesday	Lessons	Lessons	
Thursday	Lessons	Lessons	Port Sunlight village
Friday	Lessons	Lessons	Meet the British afternoon tea
Saturday	Full-day guided excursion to Liverpool, city of the Beatles and famous waterfront		

### Eastbourne

#### Mornings 9.00 – 10.30, 11.00 – 12.30

#### Afternoons

Monday	Welcome & test	Lessons	Orientation tour, cream tea with teachers
Tuesday	Lessons	Lessons	Sussex villages and Beachy Head
Wednesday	Lessons	Lessons	
Thursday	Lessons	Lessons	Croquet at Saffrons
Friday	Lessons	Lessons	
Saturday	Full-day guided excursion to Arundel including cathedral and medieval castle		



Summer Course for Teenagers class in Chester

## Summer Vacation Course (Chester)

### Summer English for Teenagers

This course, run at The Queen's School, just opposite the main school in Stanley Place, offers young learners fun, enjoyable and challenging opportunities to:

- increase your confidence in English
- learn about the culture and customs of other nations

The course is for individual teenagers and mini groups so every student is treated as an individual.

The morning lessons focus on:

- actively improving communication in spoken English.
- developing confidence in using English.

The afternoon excursion/activity programme creates the perfect environment to develop language, social and sporting skills.

### Key features

- no large groups
- a high staff to student ratio (1:10)
- a maximum of 120 students
- an excellent nationality mix
- a varied, high quality social programme
- homestay accommodation with welcoming and caring families

### Course Facts

**Hours:** 20 lessons/week (15 hours) + social programme

**Start:** Any Monday June - August

**Class size:** Maximum 14 students

**Level:** Elementary to Advanced

**Minimum age:** 13

**Maximum age:** 16



Chester teens excursion to Conway Castle

The social programme is one of the outstanding features of the course and is an integral part of the whole language learning experience. It includes:

- 2 discover Chester/ UK activities
- 2 half-day activities
- 1 half-day excursion
- 1 full-day weekend excursion on mid-course weekends
- 2 evening events

**Examples of the various social activities include:**

**Activities and events**

- Alternative fashion show
- Roman soldier tour
- Riverboat disco
- Treasure hunt

- Sports
- Photo shoot
- Bowling
- Laser tag

**Half-day excursion**

- Anfield football stadium
- Quarry Bank Mill
- Llangollen
- Beeston Castle
- Chester Zoo

**Full-day excursions**

- Liverpool
- North Wales
- Manchester



Bowling evening activity in Chester



Chester teens excursion to Liverpool



ELC Loxdale – summer centre in Brighton

## Summer Vacation courses (Brighton)

Our summer centre in Brighton, ELC Loxdale, is an attractive mansion house with its own gardens, sports hall and canteen.

### Summer Vacation course (V)

Designed for young adults typically aged 16-18 with half a day of English study. You can then join the social programme or have free time to explore Brighton.

Lessons cover speaking, listening, reading, writing and grammar. Develop your confidence and fluency in real-life English.

*On occasion, lessons may alternate between mornings and afternoons on a weekly basis.*

### Junior Vacation course (VJ)

Designed for juniors aged 13-15 where one of their parents is already studying on one of our adult courses. Half a day of lessons and a full programme of activities and supervision Monday to Friday.

*Please note that lessons and activities on the Summer Junior Vacation course are delivered by our partner, Loxdale English Centre.*



Summer Vacation course class in Brighton

#### Course Facts

**Hours:** 20 lessons/week (15 hours)

**Start:** Any Monday June – August

**Class size:** Maximum 12 students (average 10)

**Level:** Beginner to Advanced

**Age:** Minimum 16 (average 18)

**Activities:** Optional programme or package



Summer Plus course in Eastbourne

# Summer Vacation course (Eastbourne)

## Summer Plus course (SP)

Designed for young adults typically aged 16-22. Intensive English study with an inclusive programme of social activities.

Lessons cover speaking, listening, reading, writing and grammar. Develop your confidence and fluency to communicate outside the classroom.

Inclusive social programme – two afternoon activities and 1 half-day excursion per week.

### Example Activities and half-day excursions:

- Laserquest
- Mini-golf
- Kayaking
- Cinema
- Football/volleyball
- Bowling
- Horse-riding
- Hastings
- Seven Sisters
- Bodiam Castle
- Brighton
- Lewes
- Camber Sands



ELC Eastbourne garden

### Course Facts

**Hours:** 25 lessons/week (18.75 hours) + social programme

**Start:** Any Monday June – August

**Class size:** Maximum 14 students (average 12)

**Level:** Elementary to Advanced

**Age:** Minimum 16 (average 18)

**Activities:** 2 activities + 1 half-day excursion per week



Executive homestay in Brighton

## Accommodation

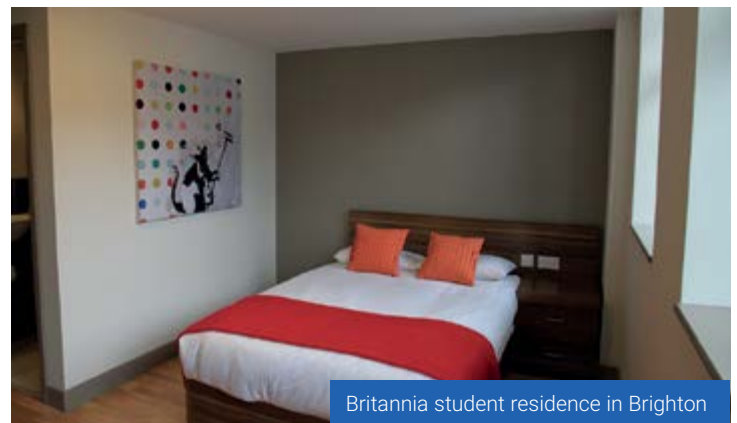
We understand how important your accommodation is for successful language study. Our dedicated accommodation teams have carefully selected a range of options to ensure that you feel as comfortable as possible.

### Homestay Accommodation

Living in homestay accommodation provides you with the perfect opportunity to experience English life and to practise using your English in everyday situations.

Our carefully selected hosts offer a friendly, safe home environment, all within 40 minutes of school.

We can offer a range of homestay options including single or twin/double rooms, shared or sole use of bathrooms, B&B or half-board and free Wi-Fi.



Britannia student residence in Brighton



Homestay in Brighton





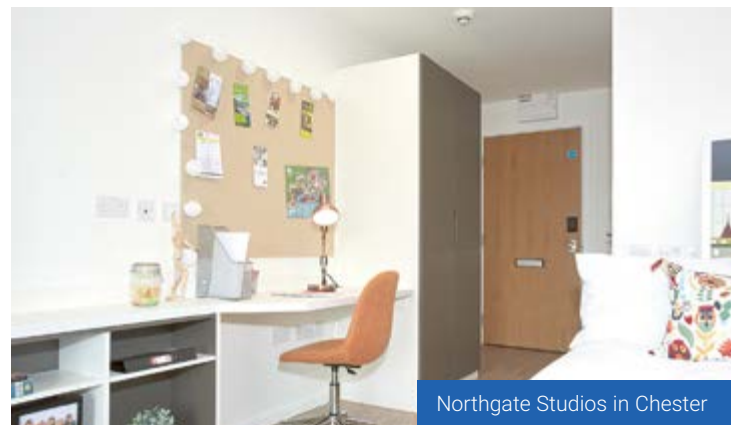
Homestay in Chester

### Residence (Brighton)

ELC has an allocation of rooms in Britannia Study Hotel, a modern residence with 134 bedrooms. This self-catering option is located in the heart of Brighton, 10 minutes' walk from school. Ensuite rooms with shared kitchens and free Wi-Fi.

### Residence (Chester)

We offer a range of self-catering residences in multiple locations in Chester, all within walking distance of the school. Ensuite rooms with shared or private kitchens and free Wi-Fi.



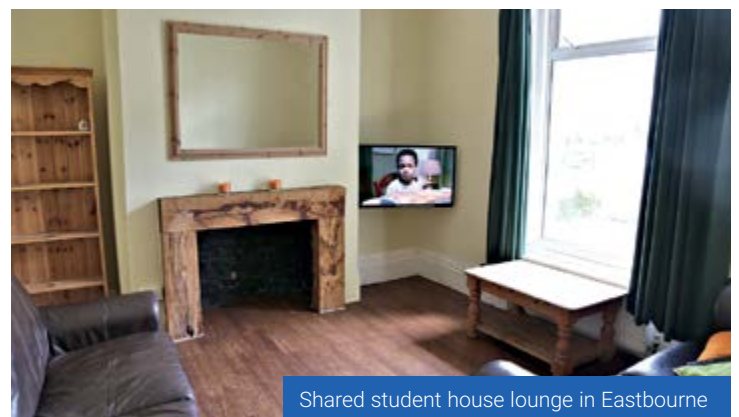
Northgate Studios in Chester

### Shared Student Houses

Ideal for students who want greater independence and to cook their own meals. Single or double rooms with free Wi-Fi and shared kitchens and shared bathrooms, all within easy walking distance of school.

### Hotels and Guest Houses

ELC has negotiated special rates with local hotels and guest houses within 5-15 minutes' walk of the school. All offer bed and breakfast, single or twin/double rooms with ensuite bathrooms and Wi-Fi.



Shared student house lounge in Eastbourne



London skyline

# Social Programme

ELC organises a full programme of afternoon and evening social activities and weekend excursions to help you practise your English, make international friends, learn about UK life and culture and explore this beautiful country.

Our social organisers offer activities most days during the week and full-day guided excursions at weekends, including:

## Social Activities

- Conversation club
- CV workshop
- Bowling
- Movie nights
- Fish & chips/cream tea

## Sports

- Football
- Tennis
- Watersports
- Volleyball
- Horseriding

## Half-day Trips

### From Chester

- Chester Zoo
- Llangollen
- Port Sunlight
- Football: Manchester, Liverpool

### From Brighton/Eastbourne

- Beachy Head & Seven Sisters
- Arundel or Bodiam castles
- Lewes
- Football: Arsenal, Chelsea



Afternoon Tea in Chester

## Weekend Excursions

### From Brighton/Eastbourne

- London
- Stratford Upon Avon
- Bath & Stonehenge
- Oxford & Windsor
- Canterbury & Leeds Castle
- Windsor & Hampton Court
- Cambridge & Greenwich
- The Making of Harry Potter

### From Chester

- Manchester
- North Wales & Conwy Castle
- Liverpool
- Lake District
- York



ELC visit to Royal Pavilion, Brighton

## Sample Social Programme

Brighton	Afternoon	Evening
Monday	Walking tour*	
Tuesday	Conversation Club*	Movie Night
Wednesday	Trip to Arundel	London Musical
Thursday	Football / Volleyball*	Laserquest
Friday	Cream Tea	
Saturday	Full day guided trip to London	
Sunday	Full day guided trip to Bath & Stonehenge	

\*Free activities. See websites for weekly programmes and prices



Stonehenge



Arundel Castle



Football in Chester

## Our students

We welcome students from all over the world, from a wide variety of backgrounds, creating unique communities that encourage appreciation of the different ways we all live, think and learn.



**Elisa, Switzerland**

ELC Brighton

"I love Brighton because there is a lot of things to do like concerts, pubs, going to the sea or the day and night life here! Also, my host family is amazing, I feel really like at home!"

**Noame, France**

ELC Eastbourne

"In class, I like the fact that we are not a lot of students – it allows us to do a lot of speaking."



**Jorge, Colombia**

ELC Brighton

"The teachers are really helpful and always try to push you to improve your English. The most interesting thing about ELC is the social programme. There are a lot of activities to do during the week and weekends."



**Giorgia, Italy**

ELC Chester

"My experience in the host family has been super positive. I enjoyed it a lot. They let me feel part of the family."



**Andrea Mauerova, Czech Republic**  
ELC Chester

"My experience here has been amazing. Chester is a perfect place to study English. I chose accommodation named Northgate. It was a good choice I could meet other people from Chester University."



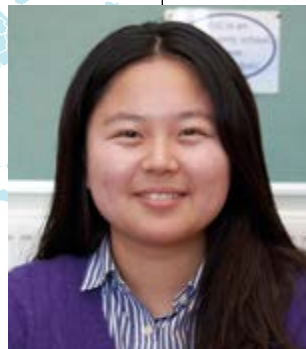
**Sinem, Turkey**  
ELC Brighton

"I feel lucky to be with such good teachers. All of them are really professional and care a lot for their students the School's education system is useful for us."



**Hideto, Japan**  
ELC Chester

"My host family, students and teachers are kind. If you have troubles, just ask! On my first day at school my classmates said to me 'Don't be afraid! no one will laugh at you if you make a mistake.' That was great experience."



**Seonyeong, South Korea**  
ELC Eastbourne

"Host families are friendly. I could make many friends of different nationalities. Perfect."



**Osama, Yemen**  
ELC Eastbourne

"Fabulous teachers and friendly team. The course is really useful and my English gets better."



Brighton seafront



Bridge Street, Chester



West Hill, Brighton



North Laine, Brighton



Palmeira Square, Hove



The Beacon Mall in Eastbourne



Trinity Trees, Eastbourne



Chester horse races



South Street, Eastbourne



Grosvenor Garden, Chester



Lake District  
National Park

York

Manchester

Liverpool

Sheffield

Chester

Snowdonia  
National Park

Birmingham

Stratford-upon-Avon

Cambridge

Oxford

Bristol

Bath

**LONDON**

Canterbury

Stonehenge

Portsmouth

Brighton

Eastbourne

The English Language Centre company registered in England No: 01508550, registered charity under the Charities Act 1960 No: 281859, owns and operates ELC Brighton, ELC Chester and ELC Eastbourne.

All photographs are copyright ELC. They were taken by ELC and are intended to give a true representation of the schools and services offered.

The information in this brochure was correct at the time of going to print. Please check our website for full details of services offered and for the most up-to-date information.



# The English Language Centre

BRIGHTON / CHESTER / EASTBOURNE



## Brighton

ELC Brighton  
33 Palmeira Mansions  
Brighton & Hove  
BN3 2GB

T: +44 1273 721771  
E: [info@elc-brighton.co.uk](mailto:info@elc-brighton.co.uk)  
W: [www.elc-schools.com](http://www.elc-schools.com)

## Chester

ELC Chester  
9-11 Stanley Place  
Chester  
CH1 2LU

T: +44 1244 318913  
E: [info@elc-chester.co.uk](mailto:info@elc-chester.co.uk)  
W: [www.elc-schools.com](http://www.elc-schools.com)

## Eastbourne

ELC Eastbourne  
8 Trinity Trees  
Eastbourne  
BN21 3LD

T: +44 1323 721759  
E: [info@elc-eastbourne.co.uk](mailto:info@elc-eastbourne.co.uk)  
W: [www.elc-schools.com](http://www.elc-schools.com)

Accredited by the  
  
for the teaching  
of English in the UK

