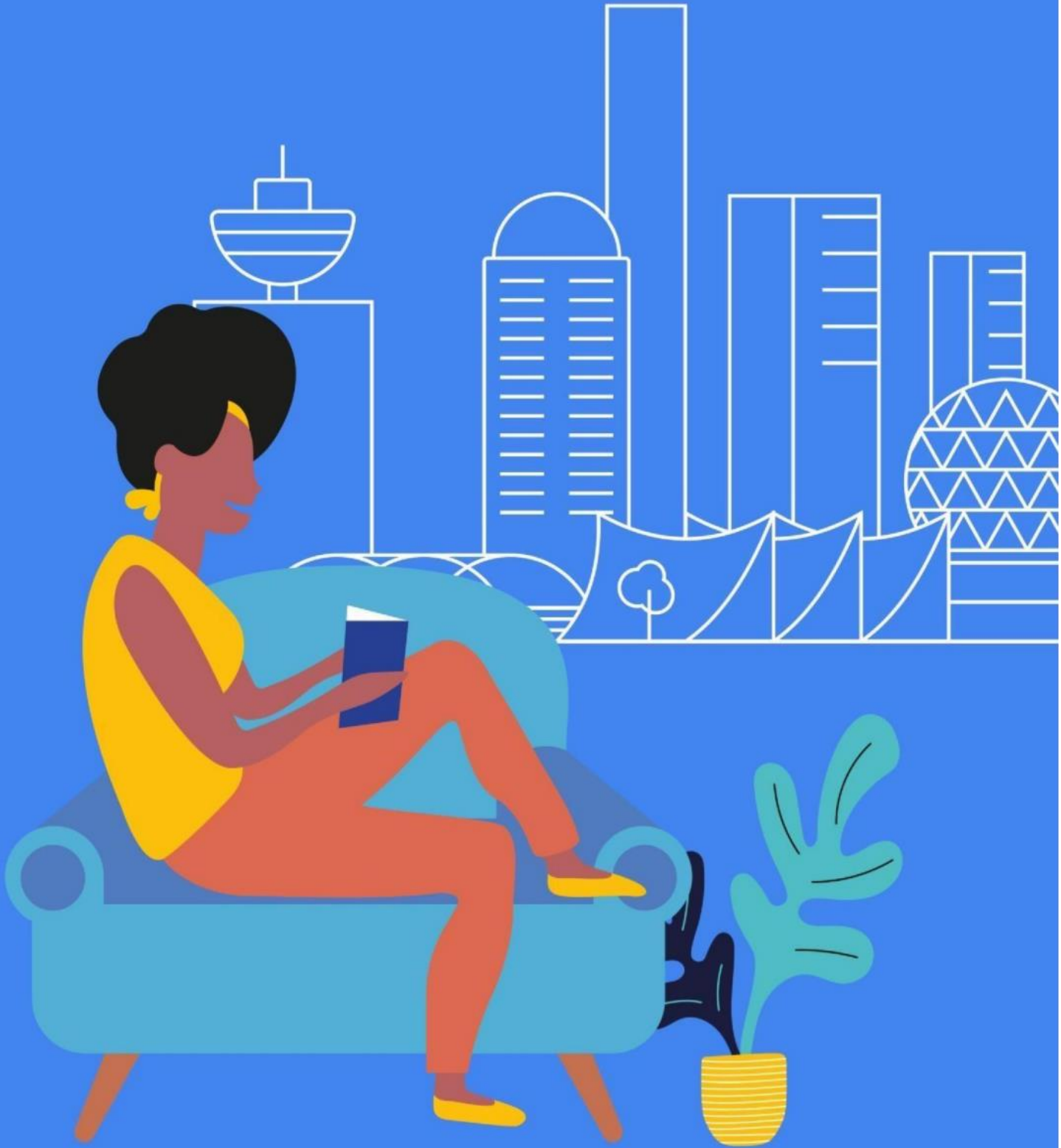


# Accommodation Vancouver, Canada

2024



# Accommodation in Vancouver

**Accommodation placement fee: CA\$215**

## Homestay

Our homestays are carefully selected and offer students the opportunity to learn more about the Canadian culture in a comfortable setting while studying English in Vancouver.

- Welcoming and friendly atmosphere
- Good and reliable transport links - average travelling distance is 60 minutes by public transportation
- Carefully selected by our Accommodation Officers and visited on a regular basis
- Choice of single rooms (or double rooms if two students book for the same time period) with bed and breakfast or half board
- Executive Supplement available
- All bed linen and towels provided



## Executive Homestay Option

Executive Homestays offer a private bathroom (en-suite or sole use). Limited availability; please contact if interested.

## Homestay Prices

### Homestay Weekly Rates (per person per week)

Single room, Bed and Breakfast	CA\$245	Twin room*, Bed and Breakfast	CA\$230
Single room, Half Board	CA\$280	Twin room*, Half Board	CA\$270

### Supplemental Rates (per person per week)

Summer Supplement (June 16 – August 25)	CA\$80	Executive Supplement (Optional)	CA\$90
Special Diets B&B/HB &FB	CA\$30/50	Christmas Supplement	CA\$55

. Please note: The U18 supplement is CA\$25

### Extra Night Rates (per person per night)\*\*

Single room, Bed and Breakfast	CA\$75	Twin room*, Bed and Breakfast	CA\$70
Single room, Half Board	CA\$80	Twin room*, Half Board	CA\$75

### Extra Night Rates, Executive (per person per night)\*\*

Single room, Bed and Breakfast	CA\$90
Single room, Half Board	CA\$95

## Key

B&B = Bed and Breakfast (Breakfast only)

HB = Half Board (Breakfast and Dinner)

FB= Full Board (Breakfast, Lunch, Dinner)

\* For students booking together with the same arrival and departure dates.

\*\* Subject to availability. Please check with the school before booking flight tickets. No extra nights during the summer time.

For cancellations made 4 weeks or more prior to the course start date, all accommodation fees are refunded, less any penalties incurred by LSI from 3rd party suppliers.

## Residences & Hostels

These options are more suitable for an independent student who is looking for a clean and basic accommodation at an affordable price. All students must be 18 or older, unless otherwise noted.

### YWCA Hotel/Residence

**Location:** Centrally located in downtown Vancouver. 15-minute walk to LSI Vancouver.

**Rooms:** Single and double rooms

**Private Bathroom:** Yes, but limited

**Meals:** Self-catering

**Facilities:** Free Wi-Fi, air conditioning, telephone, iron and ironing boards; lounge with TV, internet, café, fitness facilities, shared kitchen, laundry facilities

#### **Prices (per person per week)**

**Single room, shared bathroom**

from CA\$770

**Double room, private washroom**

from CA\$575

A non-refundable application/placement fee of CA\$215 per student is required for all bookings. This fee must be paid in advance before LSI can check availability with the residence. If the residence has no availability, the placement fee is refundable.

A non-refundable move-in fee of \$220 will be charged.

**Availability:** Year-round. Peak season: May 1 – September 30 – please note an additional Summer Supplement of CA\$125 will apply for peak season bookings. **Other:** Bed linen provided, 24 hours security.

**Note 1:** Once a booking has been made, fees for changes and/or early checkouts will be assessed and charged. Stays longer than 4 weeks are not accepted during peak season. Monthly rates are only available for 4 week intervals, any additional weeks will be calculated at the weekly rates.

**Note 2:** All students must be 18 or older unless otherwise noted. A compulsory fee for minors under 18 applies.

**Note 3:** Any changes to the dates of the accommodation must be made with at least two weeks' notice if the student decides to postpone their course, and a fee will be applied.



For more information please contact: LSI Vancouver E: [van@lsi.edu](mailto:van@lsi.edu) T: +1 604 683 7654

## GEC Viva

**Location:** 17-floor tower in the heart of downtown, featuring panoramic views of the city and the North Shore Mountains. 17-minute walk to LSI Vancouver.

**Rooms:** Single/double rooms, studio apartments

**Meals:** Self-catering

**Facilities:** Fully furnished apartments with equipped kitchen, bathrooms with bathtub and shower, in-suite laundry, additional storage space, unlimited high-speed wireless internet.



### Prices (per person per week)

#### Shared bedroom, shared bathroom

5-12 weeks:	Contact LSI Vancouver	13+ weeks:	Contact LSI Vancouver
-------------	-----------------------	------------	-----------------------

#### Sectioned (semi-private) bedroom, shared bathroom:

5-12 weeks:	Contact LSI Vancouver	13+ weeks:	Contact LSI Vancouver
-------------	-----------------------	------------	-----------------------

#### Private bedroom, shared bathroom

5-12 weeks:	Contact LSI Vancouver	13+ weeks:	Contact LSI Vancouver
-------------	-----------------------	------------	-----------------------

*Private apartments may be available upon request.*

*Refundable security deposit (2 weeks rent) and amenities fee (CA\$210) to be paid directly to GEC in order to confirm room.*

**Availability:** Year-round

**Other:** 24-hour building CCTV, housekeeping, bicycle storage.

**Note 1:** All students must be 18 or older unless otherwise noted. A compulsory fee for minors applies.

**Note 2:** Any changes to the dates of the accommodation must be made with at least two weeks' notice if the student decides to postpone their course, and a fee will be applied.

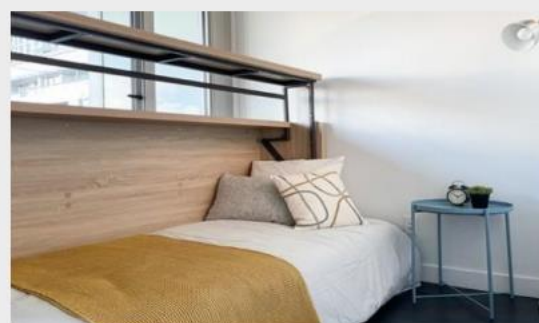
## GEC Marine Gateway

**Location:** Student residence in the heart of Vancouver. It features modern interior designs, energy-efficient amenities, and a beautifully landscaped courtyard. 25-minute by bus to LSI Vancouver.

**Rooms:** Sectioned rooms, studio apartments, one/two-bedroom apartments.

**Meals:** Self-catering

**Facilities:** Fully furnished apartments with equipped kitchen, bathrooms with bathtub and shower, in-suite laundry, additional storage space, unlimited high-speed wireless internet.



### Prices (per person per week)

#### Sectioned (semi-private) bedroom, shared bathroom

5-12 weeks:	Contact LSI Vancouver	13+ weeks:	Contact LSI Vancouver
-------------	-----------------------	------------	-----------------------

#### Private bedroom, shared bathroom

5-12 weeks:	Contact LSI Vancouver	13+ weeks:	Contact LSI Vancouver
-------------	-----------------------	------------	-----------------------

#### Studio apartment

5-12 weeks:	Contact LSI Vancouver	13+ weeks:	Contact LSI Vancouver
-------------	-----------------------	------------	-----------------------

#### One bedroom apartment

5-12 weeks:	Contact LSI Vancouver	13+ weeks:	Contact LSI Vancouver
-------------	-----------------------	------------	-----------------------

#### Two bedroom apartment

5-12 weeks:	Contact LSI Vancouver	13+ weeks:	Contact LSI Vancouver
-------------	-----------------------	------------	-----------------------

Refundable security deposit (2 weeks rent) and amenities fee (CA\$210) to be paid directly to GEC in order to confirm room.

**Availability:** Year-round

**Other:** 24-hour building CCTV, housekeeping, paid underground parking available.

**Note 1:** All students must be 18 or older unless otherwise noted. A compulsory fee for minors applies.

**Note 2:** Any changes to the dates of the accommodation must be made with at least two weeks' notice if the student decides to postpone their course, and a fee will be applied.

## GEC Pearson

**Location:** The brand-new student housing building is in a peaceful and quiet neighbourhood, with the beautiful Langara Golf Course across the street. 30-minute by bus to LSI Vancouver.

**Rooms:** Shared/sectioned rooms, private rooms, private apartments.

**Meals:** Self-catering

**Facilities:** Fully furnished apartments with equipped kitchen, bathrooms with bathtub and shower, in-suite laundry, additional storage space, unlimited high-speed wireless internet.

### Prices (per person per week)

#### Shared bedroom, shared bathroom

5-12 weeks: Contact LSI Vancouver

13+ weeks: Contact LSI Vancouver

#### Section bedroom (semi-private), shared bathroom

5-12 weeks Contact LSI Vancouver

13+ weeks: Contact LSI Vancouver

#### Private bedroom, shared bathroom

5-12 weeks: Contact LSI Vancouver

13+ weeks: Contact LSI Vancouver

#### Studio apartment (inclusive)

5-12 weeks: Contact LSI Vancouver

13+ weeks: Contact LSI Vancouver



Refundable security deposit (2 weeks rent) and amenities fee (CA\$210) to be paid directly to GEC in order to confirm room.

**Availability:** Year-round

**Other:** 24-hour building CCTV, housekeeping, paid underground parking available, bicycle storage.

**Note 1:** All students must be 18 or older unless otherwise noted. A compulsory fee for minors applies.

**Note 2:** Any changes to the dates of the accommodation must be made with at least two weeks' notice if the student decides to postpone their course, and a fee will be applied.